

Gallery Earrings

Project E722 [Skill Level: Beginner]
Designer: Julie Bean

These pretty and petite earrings would make a lovely addition to your jewelry wardrobe. They can easily be dressed up or down and are so easy to make that you will want to make a pair in every color.



What You'll Need

SWAROVSKI ELEMENTS Crystal #5000 8mm Round Emerald Green (8)
SKU: SWC-0850
Project uses 2 pieces



22K Gold Plated Pewter Round 14mm Bead Frame Fits SWAROVSKI ELEMENTS (2)



SKU: BMB-3675
Project uses 2 pieces

SWAROVSKI ELEMENTS Crystal #5328 3mm Bicone Beads Emerald (25 Beads)



SKU: SWBB-1350
Project uses 2 pieces

22K Gold Plated Stud Earrings Ball Post & Ring 4mm (20)



SKU: FEA-1048
Project uses 1 pair

22K Gold Plated Earring Backs (Earnuts) Med. (100)



SKU: FEA-1015
Project uses 2 pieces

22K Gold Plated Head Pins - 22 Gauge/1.5 Inches (50)



SKU: FHP-5215
Project uses 2 pieces

Specialized Tools

Beadsmith Jeweller's Micro Pliers Chain Nose Flat Nose



SKU: XTL-5511

Wire Looping Pliers - Concave And Round Nose



SKU: XTL-5032

Xuron Sharp Flush Cutter Pliers - Wire/Soft Flex



SKU: XTL-5600

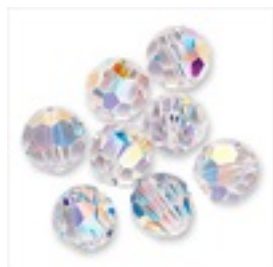
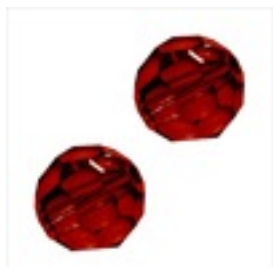
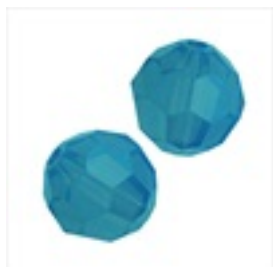
Instructions:

1. Place onto a head pin 1 round bead frame with an 8mm SWAROVSKI ELEMENTS round bead in emerald inside it, and 1 3mm SWAROVSKI ELEMENTS bicone bead in emerald.
2. Create a simple wire loop using wire looping pliers after the last bead.
3. Open the simple loop you just created and link it to the loop at the base of your stud earring post with ball. Close the loop back up.
4. Place an earnut on the backside of your post earring.
5. Enjoy!

Variations

Choose your favorite color!

When substituting in items, pay attention to sizes and styles to make sure all your pieces will fit together.



Keywords: bead frames, tierracast, emerald, birthstone, SWAROVSKI ELEMENTS, St. Patrick's Day