

# Paradise Cove Earrings

**Project E2254**

*Kat Silvia*

These earrings feature Swarovski Crystal Fine Rock Tubes in Paradise Shine for a beautiful glittering focal.

## What You'll Need

Swarovski Crystal, 5951 Fine Rocks Tube Bead without Metal Ends 15mm, 1 Piece, Light Amethyst / Paradise Shine

SKU: SWCR-5342

Project uses 2 pieces



TierraCast Pewter, Bead Cap with Lotus Pattern 3.5x7.5mm, 2 Pieces, Antiqued Silver Plated

SKU: BMB-300

Project uses 4 pieces



Swarovski Crystal, 6128 Mini Pear Pendants 12mm, 4 Pieces, Crystal Paradise Shine

SKU: SWC-99142

Project uses 2 pieces



Silver Plated Open Eye Pins 22 Gauge 2 Inch (x50)

SKU: FHP-6267

Project uses 2 pieces



Silver Plated Open Jump Rings 6mm 20 Gauge (50)

SKU: FJR-5219

Project uses 2 pieces



Silver Plated Surgical Steel Earring Hooks Hypo-Allergenic (x100)

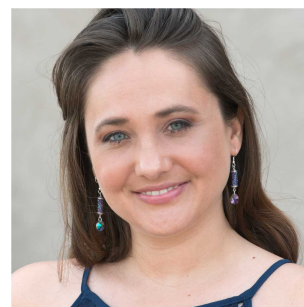
SKU: FEA-3005

Project uses 2 pieces



### Recommended Tools:

[PL5222] Tronex Tools, Flush Cutter Pliers with Standard Handle and Tip Protector 5 Inches Long, 1 Piece, [PL5130] Tronex Tools, Short Chain Nose Pliers with Standard Handle and Tip Protector 5 Inches Long, 1 Piece, [PL5320] Tronex Tools, Short Round Nose Pliers with Standard Handle and Tip Protector 5 Inches Long, 1 Piece



## Instructions

By following the instructions below you will make one earring. Repeat all instructions to make the second earring.

1. To see how to complete these earrings, please watch our video: [How to Make a Pair of Earrings with Swarovski Crystal Fine Rock Tubes.](#)