

Paradise Shine Studs

Project E2239

Kat Silvia

These tiny stud earrings are perfect for wedding and bridesmaid's jewelry. Just choose your bridal colors to customize this delicate design.

What You'll Need

Gita Jewelry Stone Setting for Swarovski Crystal, Stud Post Earrings for SS39 Chaton w/ Crystal, 1 Pair, Gold Plated

SKU: FEA-9678

Project uses 1 Pair



Swarovski Crystal, 1088 Xirius Round Stone Chatons ss39, 6 Pieces, Paradise Shine

SKU: SWCH-639548

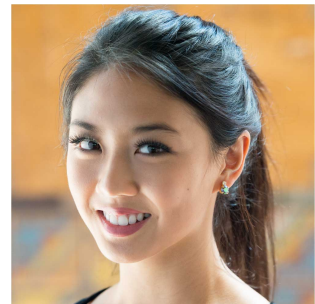
Project uses 2 pieces



Recommended Tools:

[XTL-1292] BeadSmith Prong Pusher Tool, Square Tip for Gemstones and Crystal Settings,

Wooden Handle



Instructions

1. To see how to make these earrings, please watch our video: [How to Use the Beadsmith Prong Pusher with Gita Settings for Swarovski Crystal.](#)