

Slick Night Earrings

Project E2236

Kat Silvia

Swarovski Crystals are set into beautiful Gita Jewelry settings for a sparking evening design.

What You'll Need

Gita Jewelry Stone Setting for Swarovski Crystal, Pendant Base for 12mm Cushion, Rhodium Plated

SKU: PND-301

Project uses 2 pieces



Gita Jewelry Stone Setting for Swarovski Crystal, Connector for SS39 Chaton, Rhodium Plated

SKU: FCO-1070

Project uses 2 pieces



Swarovski Crystal, 1088 Xirius Round Stone Chatons ss39, 6 Pieces, Crystal F

SKU: SWCH-63900

Project uses 2 pieces



Swarovski Crystal, 4470 Cushion Fancy Stone 12mm, 1 Piece, Crystal Rainbow Dark Foiled

SKU: SWCR-4385

Project uses 2 pieces



Silver Plated Long Elegant Earring Hooks 25x16.5mm (50)

SKU: FEA-3025

Project uses 2 pieces



Silver Plated Open Jump Rings 5mm 20 Gauge (x100)

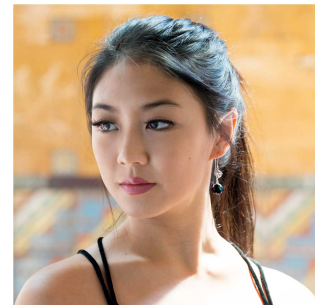
SKU: FJR-5150

Project uses 2 pieces



Recommended Tools:

[PL5130] Tronex Tools, Short Chain Nose Pliers with Standard Handle and Tip Protector 5 Inches Long, 1 Piece, [PL5510] Tronex Tools, Smooth Bent Nose Pliers with Standard Handle and Tip Protector 5 Inches Long, 1 Piece, [XTL-1289] Smart Setter Stone Setting Tool, Works with Gita Jewelry Components, Sets Swarovski 1088 Size SS39 / 8.5mm Chatons, [STICK-PKIT-00] Natural Wood Craft Sticks, Flat with Rounded Edge 4.5 Inches, 10 Sticks



Instructions

1. To see how to make these earrings from start to finish, please watch our video: [Quick & Easy DIY Jewelry: The Slick Night Earrings.](#)