

Purple Rain Earrings

Project E2234

Kat Silvia

Delicate droplets shimmer in these Gita Jewelry Earring Studs featuring Swarovski Crystal Amethyst pear fancy stones.

What You'll Need

Gita Jewelry Stone Setting for Swarovski Crystal, Stud Post Earrings for 14x10mm Pear, 1 Pair, Rhodium Plated

SKU: FEA-9688

Project uses 1 Pair



Swarovski Crystal, 4320 Pear Fancy Stone 14x10mm, 1 Piece, Amethyst F

SKU: SWCR-4147

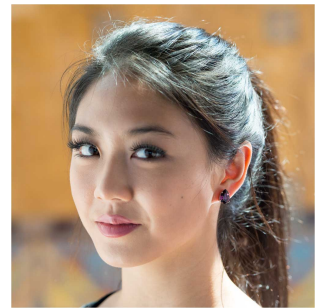
Project uses 2 pieces



Recommended Tools:

[XTL-1292] BeadSmith Prong Pusher Tool, Square Tip for Gemstones and Crystal Settings,

Wooden Handle



Instructions

1. To see how to make these earrings, please watch our video: [How to Use the Beadsmith Prong Pusher with Gita Settings for Swarovski Crystal.](#)