

Drops of Scarlet Earrings

Project E2233

Kat Silvia

Rich scarlet pear drops sparkle in these simple, yet elegant stud earrings.

What You'll Need

Gita Jewelry Stone Setting for Swarovski Crystal, Stud Post Earrings for 18x13mm Pear, 1 Pair, Gold Plated

SKU: FEA-9691

Project uses 1 Pair



Swarovski Crystal, 4320 Pear Fancy Stone 18x13mm, 1 Piece, Scarlet F

SKU: SWCR-4280

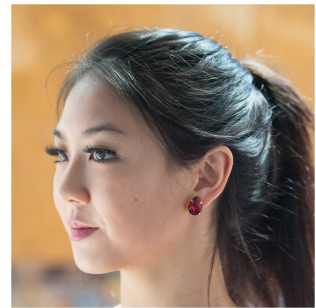
Project uses 2 pieces



Recommended Tools:

[XTL-1292] BeadSmith Prong Pusher Tool, Square Tip for Gemstones and Crystal Settings,

Wooden Handle



Instructions

1. To see how to make these earrings, please watch our video: [How to Use the Beadsmith Prong Pusher with Gita Settings for Swarovski Crystal](#).