

Emerald Rose Earrings

Project E2220

Kat Silvia

Tiny gold rose connectors stand out in these Swarovski Crystal Emerald earrings. Perfect for a touch of luxury and romance.

What You'll Need

Bulk Chain, Elegant Rose Stampings 6.5mm, By the Foot, Gold Tone

SKU: CHA-1201

Project uses 1.5 Inches



Swarovski Crystal, 5515 Emerald Cut Bead 14x9.5mm, 1 Piece, Emerald

SKU: SWCR-5110

Project uses 2 pieces



Swarovski Crystal, 5328 Bicone Beads 4mm, 24 Pieces, Emerald

SKU: SWBI-1450

Project uses 6 pieces



22K Gold Plated Long Elegant Earring Hooks 25mm (50)

SKU: FEA-3030

Project uses 2 pieces



22K Gold Plated Head Pins - 22 Gauge/1.5 Inches (50)

SKU: FHP-5215

Project uses 2 pieces



22K Gold Plated Open Eye Pins 22 Gauge 2 Inch (x50)

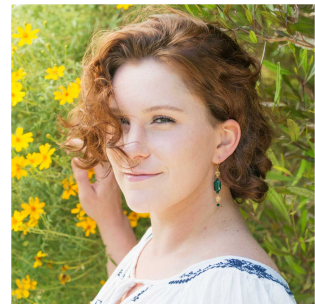
SKU: FHP-6258

Project uses 2 pieces



Recommended Tools:

[PL5130] Tronex Tools, Short Chain Nose Pliers with Standard Handle and Tip Protector 5 Inches Long, 1 Piece, [PL5320] Tronex Tools, Short Round Nose Pliers with Standard Handle and Tip Protector 5 Inches Long, 1 Piece, [PL5222] Tronex Tools, Flush Cutter Pliers with Standard Handle and Tip Protector 5 Inches Long, 1 Piece



Instructions

By following the instructions below you will make one earring. Repeat all instructions to make the second earring.

1. To see how to make these earrings from start to finish please watch our video: [Quick & Easy DIY Jewelry: Bridal Rose Earrings.](#)