

## Vintage Drama Earrings

Project E2022 [Skill Level: Beginner]

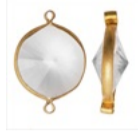
Designer: Kat Silvia

These 4" drop earrings are full of Drama and fun. These are the lightest earrings to wear, especially for those long nights on the town.



### What You'll Need

Vintage Lucite Antiqued Gold Toned Rivoli Pendant Link Crystal 22mm (6)



SKU: BCV-39  
Project uses 2 pieces

Vintage Lucite Antiqued Gold Toned Rivoli Pendants Crystal 18mm (6)



SKU: BCV-33  
Project uses 2 pieces

Vintage Lucite Antiqued Gold Toned Rivoli Pendant Link Jet 22mm (6)



SKU: BCV-41  
Project uses 2 pieces

Vintage Lucite Antiqued Gold Toned Rivoli Pendant Link Jet 19.5mm (8)



SKU: BCV-28  
Project uses 2 pieces

Antiqued Brass French Wire Earring Hooks 16mm (10 Pairs)



SKU: FEA-3060  
Project uses 2 pieces

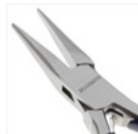
Antiqued Brass Open Jump Rings 5mm 20 Gauge (x100)



SKU: FJR-5471  
Project uses 6 pieces

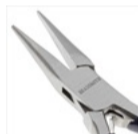
### Specialized Tools

Beadsmith Jeweller's Micro Pliers Chain Nose Flat Nose



SKU: XTL-5511

Beadsmith Jeweller's Micro Pliers Chain Nose Flat Nose



SKU: XTL-5511

### Instructions:

By following the instructions below, you will make one earring. Repeat all instructions to make the second earring.

1. Start by opening one jump ring, attach it to one 18mm Crystal rivoli pendant and one 22mm Jet rivoli. Close the jump ring.
2. Open one jump ring and attach the other side of the 22mm Jet rivoli to one 22mm Crystal rivoli. Close the jump ring.
3. Open one jump ring and attach the other side of the 22mm Crystal rivoli to one 19.5mm Jet rivoli. Close the jump ring.
4. Open the earring finding, same as you did the jump ring. Attach the other side of the 19.5mm Jet rivoli to it. Close the jump ring.

### Variations

Be sure to check out all of the wonderful colors of Vintage Lucite Rivolis.

When substituting in items, pay attention to sizes and styles to make sure all your pieces will fit together.



**Keywords:** Vintage, rivoli, lucite, plastic, brass, crystal, jet, btq-vintagelook