

## Margot Earrings

**Project E2003** [Skill Level: Beginner]

Designer: Kat Silvia

An unexpected mix of SWAROVSKI ELEMENTS Lavender and Chrysolite against the Vintaj make these earrings a show stopper.



### What You'll Need

Vintaj Natural Brass Chandelier Bohemian Drop Pendant 19.5x41.5mm (2)



SKU: PND-7394  
Project uses 2 pieces

SWAROVSKI ELEMENTS Crystal Bicone Pendant Beads 6301 8mm Provence Lavender (8)



SKU: SWC-34151  
Project uses 4 pieces

Antiqued Brass Open Jump Rings 7mm 19 Gauge (20)



SKU: FJR-5175  
Project uses 6 pieces

SWAROVSKI ELEMENTS Crystal Pear Pendant Beads 16mm Provence Lavender / Chrysolite Blend /2



SKU: SWC-4017  
Project uses 2 pieces

Vintaj Natural Brass 4x3mm Small Cable Chain - Sold By The Foot



SKU: CHA-10071  
Project uses 12 pieces

Vintaj Natural Brass Classic French Ear Wire 20mm (2 Pair)



SKU: FEA-6620  
Project uses 2 pieces

### Specialized Tools

Beadsmith Jeweller's Micro Pliers Chain Nose Flat Nose



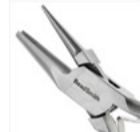
SKU: XTL-5511

Xuron Sharp Flush Cutter Pliers - Wire/Soft Flex



SKU: XTL-5600

Wire Looping Pliers - Concave And Round Nose



SKU: XTL-5032

### Instructions:

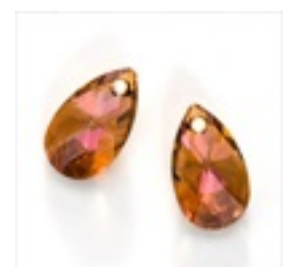
By following the instructions below, you will make one earring. Repeat all instructions to make the second earring.

1. Start by cutting off 6" of chain. Attach three jump rings to the three holes at the bottom of the pendant. By opening the jump rings. Leave them open.
2. On one of the outside rings place one side of the chain. Scoop the chain approx 11/2" to bring to the other outside jump ring. Then scoop back to the first jump ring with approx 1" of chain to create a tiered effect.
3. To both the outside rings, slide a bicone crystal on to the front jump ring of the earring to cover the chain in the back. Close both those jump rings.
4. For the jump ring in the middle, attach the teardrop crystal. Close that jump ring.
5. Open the earring finding, the same way you would a jump ring, and attach to the top of the pendant. Close the earring finding to secure.

### Variations

Try different center beads with contrasting colors too!

When substituting in items, pay attention to sizes and styles to make sure all your pieces will fit together.



**Keywords:** Vintaj Natural Brass, Chandelier, earrings, SWAROVSKI ELEMENTS, btq-vintagelook