

The Victorian Woman in Black

Project E2002 [Skill Level: Beginner]

Designer: Kat Silvia

I love this use of the classic Victorian Pewter piece with the dark crystal. Just the right about of mystery and class.



What You'll Need

Sterling Silver French Wire Earring Hooks (10)



SKU: FEA-2010
Project uses 2 pieces

Silver Plated Open Eye Pins 21 Gauge 1.5 Inch (x50)



SKU: FHP-6260
Project uses 2 pieces

Silver Plated Head Pins 2 Inches Long/22 Gauge (X50)



SKU: FHP-5320
Project uses 2 pieces

Vintaj Artisan Pewter Oval Victorian Woman Connector Link 12x25mm (1)



SKU: FCO-5271
Project uses 2 pieces

Preciosa Czech Crystal Beads 6mm Bicone 'Jet' Black (20)



SKU: BCZ-5615
Project uses 2 pieces

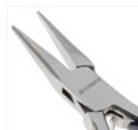
Czech Fire Polish Glass Beads 10mm x 12.5mm Teardrop Jet Black (4)



SKU: BCP-5902
Project uses 2 pieces

Specialized Tools

Beadsmith Jeweller's Micro Pliers Chain Nose Flat Nose



SKU: XTL-5511

Xuron Sharp Flush Cutter Pliers - Wire/Soft Flex



SKU: XTL-5600

Wire Looping Pliers - Concave And Round Nose



SKU: XTL-5032

Instructions:

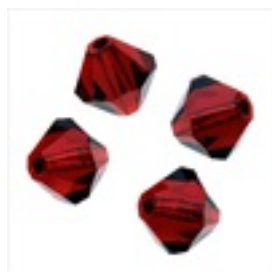
By following the instructions below, you will make one earring. Repeat all instructions to make the second earring.

1. Place your Tear Drop crystal (so the larger part of the crystal is down) on to the head pin. Create a simple wire loop.
2. Attach the head pin to one side of the Victorian Woman Pewter piece.
3. Attach the open eye pin to the other side of the Pewter piece by opening it like a jump ring. Add 1 crystal bicone bead.
4. Then create a simple wire loop and hang one of the earrings from the earring finding hook.

Variations

Choose your favorite color of crystals.

When substituting in items, pay attention to sizes and styles to make sure all your pieces will fit together.



Keywords: Crystal, Vintaj pewter, drop earrings, Preciosa Czech Crystal Beads, bicone, black, btq-vintagelook