

Blushing Blossom Earrings

Project E195

Designer: Andrea Morici

These delicate earrings feature pale vintage rose colored cathedral bead flower buds, hanging from antiqued silver filigree stems.



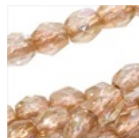
What You'll Need

Czech Cathedral Glass Beads 8mm Vintage Rose / Silver Ends (10)



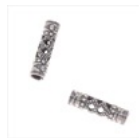
SKU: BCP-6814
Project uses 2 pieces

Czech Fire Polish Glass Beads 3mm Round Crystal Copper Lined AB (50)



SKU: BCP-3313
Project uses 4 pieces

Antiqued Silver Plated Filigree Tube Beads 13mm (2)



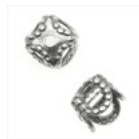
SKU: BMB-6375
Project uses 2 pieces

Antiqued Silver Plated 7mm Hobnail Bumpy Bead Caps (4)



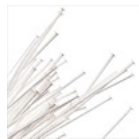
SKU: BMB-3449
Project uses 2 pieces

Antiqued Silver Plated Square Filigree Bead Caps 5mm (6)



SKU: BMB-3451
Project uses 2 pieces

Silver Plated Head Pins - 21 Gauge 3 Inches (25)



SKU: FHP-05326
Project uses 2 pieces

Niobium Earring Hooks Hypo-Allergenic x4 (2 Pair)



SKU: FEA-1531
Project uses 2 pieces

Instructions:

1. Remember to double all of the instructions in order to make both earrings. First, prepare the 5mm antiqued silver plated square filigree bead cap (BMB-3451) by flattening it. To do this, gently pry the four sides of the bead cap outward with a pair of chain nose pliers until the bead cap is relatively flat. To further flatten it, gently and steadily press the bead cap against a solid, smooth, scratch resistant surface. Set these aside.
2. Onto a headpin thread the following: a dusty rose cathedral bead, an antiqued silver plated hobnail bead cap, the flattened square bead cap, a 3mm round crystal copper lined AB Czech fire polish bead, an antiqued silver plated filigree tube bead, and another 3mm round crystal copper lined AB Czech fire polish bead. Create a wrapped with loop (LINK) at the end of the headpin, and trim off excess wire.
3. Gently open the loop at the bottom of the earring hook, the same way you would open a jump ring. Thread it through the wrapped wire loop at the top of the headpin, and then close it once more.

Variations:

Create an entirely new look by using warm, rich brass components in place of the silver. You can also change out the color of your 8mm cathedral beads or 3mm round beads (check out Swarovski's selection too).

When substituting in items, pay attention to sizes and styles to make sure all your pieces will fit together.

