

## Emerald Evening Earrings

**Project E1055** [Skill Level: Beginner]

Designer: Megan Milliken

These earrings are delicate and simple, but they pack a lot of sparkle! They'll be sure to add some glamour to any outfit!



### What You'll Need

Czech Crystal Round Pave Beads - Emerald Rainbow - 10mm (1 Piece)



SKU: BMB-2977  
Project uses 2 pieces

Czech Crystal Drop Pave Beads - Emerald - 17x10mm (1 Piece)



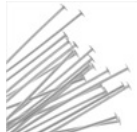
SKU: BMB-3028  
Project uses 2 pieces

Sterling Silver French Wire Earring Hooks (10)



SKU: FEA-2010  
Project uses 2 pieces

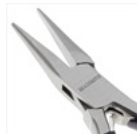
Sterling Silver Head Pins 22 Gauge 2 Inches (10)



SKU: FHP-02320  
Project uses 4 pieces

### Specialized Tools

Beadsmith Jeweller's Micro Pliers Chain Nose Flat Nose



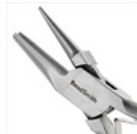
SKU: XTL-5511

Xuron Sharp Flush Cutter Pliers - Wire/Soft Flex



SKU: XTL-5600

Wire Looping Pliers - Concave And Round Nose



SKU: XTL-5032

### Instructions:

NOTE: These beads are a little bit fragile, so I don't recommend creating a wrapped wire loop on them.

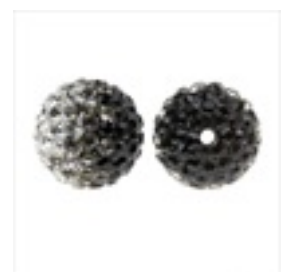
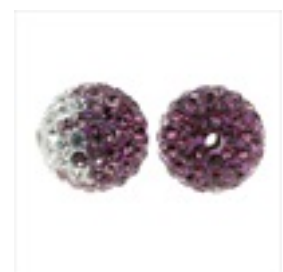
Please remember to double these instructions to create your matched pair of earrings.

1. Place an Emerald Czech crystal drop pave bead onto a sterling silver 2", 22 gauge head pin and create a simple wire loop after the bead.
2. Clip the head off of another head pin. Create a simple wire loop in the end of the head pin. Then slide a emerald rainbow Czech crystal round pave bead onto the pin and create another simple loop after the bead.
3. Open one of the loops on the round bead and attach it to the loop on the drop.
4. Open the loop on a sterling silver French wire earring hook and hang the free loop on the round bead from it; close the loop.

### Variations

Choose your favorite color of Czech crystal pave beads to personalize your pair of earrings.

When substituting in items, pay attention to sizes and styles to make sure all your pieces will fit together.



**Keywords:** pave, crystal, sparkle, emerald, ombre