

Rowan Earrings

Project E1040 [Skill Level: Intermediate]  
Designer: Megan Milliken

Jet black teardrop Czech glass beads catch the light and complement the antique brass components of these earrings in a lovely way. Perfect for dressing up or down!



What You'll Need

Brass Oxide Finish Pewter Stud Post Earrings Beaded Round 11mm (1 Pair)  
SKU: FEA-1586  
Project uses 2 pieces



Czech Fire Polish Glass Beads 12mm x 16mm Teardrop Jet Black (4)  
SKU: BCP-5960  
Project uses 2 pieces



Antiqued Brass Head Pins 2 Inches/21 Gauge (X50)  
SKU: FHP-6302  
Project uses 2 pieces



Antiqued Brass Open Jump Rings Oval 4x6mm 20 Gauge x50  
SKU: FJR-3908  
Project uses 4 pieces



Antiqued Brass Earring Backs (Earnuts) Medium (50)  
SKU: FEA-1021  
Project uses 2 pieces



Brass Oxide Finish Teardrop Chandelier Earring Findings W/ Center Loop 33.5mm (2)  
SKU: FEA-9921  
Project uses 2 pieces



Specialized Tools

Beadsmith Jeweller's Micro Pliers Chain Nose Flat Nose  
SKU: XTL-5511



Wire Looping Pliers - Concave And Round Nose  
SKU: XTL-5032



Xuron Sharp Flush Cutter Pliers - Wire/Soft Flex  
SKU: XTL-5600



Instructions:

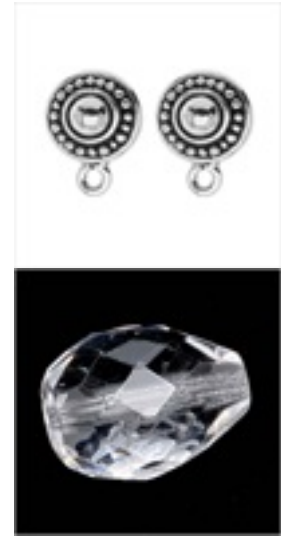
Remember to double these instructions to create your matched pair of earrings.

1. Place a jet black 12 x 16mm Czech fire polish teardrop bead onto a 2" antique brass head pin. Create a wrapped wire loop after the bead. Trim the excess and smooth down the end of the wire.
2. Use a 4 x 6mm antique brass oval jump ring to hang your wire loop from the loop on a 33.5mm brass oxide finished pewter teardrop earring finding.
3. Use another oval jump ring to attach the loop on your earring finding to the loop on a brass oxide finished pewter beaded round earring post.
4. Place an antique brass earring back onto your earring post.

Variations

Choose a different finish for your components with beads to match.

When substituting in items, pay attention to sizes and styles to make sure all your pieces will fit together.



Keywords: antique, brass, black, jet, earring, drop, Tierracast