

## Cosmic Diva Earrings in Atomic Cherry

Project E1031

Designer: Megan Milliken

These futuristic earrings feature SWAROVSKI ELEMENTS crystal components and would be a fun and funky accent for when you're feeling out of this world!



### What You'll Need

SWAROVSKI ELEMENTS Crystal Cosmic Ring Pendant 4139 20mm Crystal Cal V SI (1)



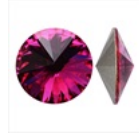
SKU: SWC-9022  
Project uses 2 pieces

Silver Filled Blank Stamping 'Circle' Pendant 19.5mm (1)



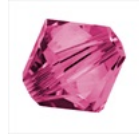
SKU: PND-3018  
Project uses 2 pieces

SWAROVSKI ELEMENTS Crystal Rivoli Beads 1122 14mm Fuchsia SF (2)



SKU: SWC-9366  
Project uses 2 pieces

SWAROVSKI ELEMENTS Crystal Xilion Bicones 5328 6mm Fuchsia Beads (20)



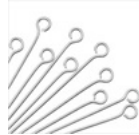
SKU: SWBB-1684  
Project uses 2 pieces

Silver Filled Extra Long Angled Earring Hooks 44mm (1 Pair)



SKU: FEA-1203  
Project uses 2 pieces

Silver Plated Open Eye Pins 21 Gauge 1.5 Inch (x50)



SKU: FHP-6260  
Project uses 2 pieces

E6000 Industrial Strength Glue Adhesive (0.18 fl oz)



SKU: XTL-1054  
Project uses 1 tube

### Specialized Tools

Xuron Sharp Flush Cutter Pliers - Wire/Soft Flex



SKU: XTL-5600

Wire Looping Pliers - Concave And Round Nose



SKU: XTL-5032

Beadsmith Jeweller's Micro Pliers Chain Nose Flat Nose



SKU: XTL-5511

### Instructions:

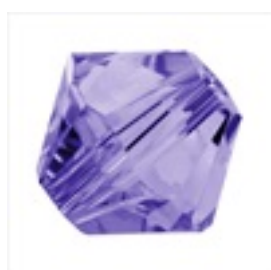
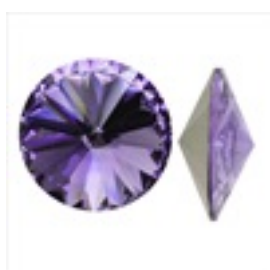
Remember to double these instructions to create your matched pair of earrings.

1. Apply a small amount of E6000 adhesive to the backside of a crystal CAL 20mm crystal cosmic ring, making sure you keep your glue to the inner part of the back of the ring. If your glue goes too far to the outside, it will show on the sides of your earring. In this design, the foiled side is the back side.
2. Place your cosmic ring glue side down onto a 19.5mm silver filled stamping blank, making sure it's completely centered. Allow glue to set for an hour before continuing.
3. Place a good amount of E6000 into the center of the cosmic ring on the stamping blank. There should be a good sized dab, but not too much. It should be less than half way up the center of the ring.
4. Place a 14mm fuchsia rivoli point side down into the glue in the center of the ring. Make sure it's centered and leave to dry overnight.
5. Put a 6mm fuchsia bicone bead onto a 1 1/2", 21 gauge silver plated eye pin. Create a simple wire loop after the bead and trim the excess.
6. Use the loops on the ends of your eye pin to attach one end to your crystals on the blank and the other end to a silver filled long angled earring hook.

### Variations

Choose your favorite color of crystal components and customize the look of your earrings.

When substituting in items, pay attention to sizes and styles to make sure all your pieces will fit together.



**Keywords:** futuristic, space, bling, SWAROVSKI ELEMENTS, cosmic ring, rivoli, pink, fuchsia