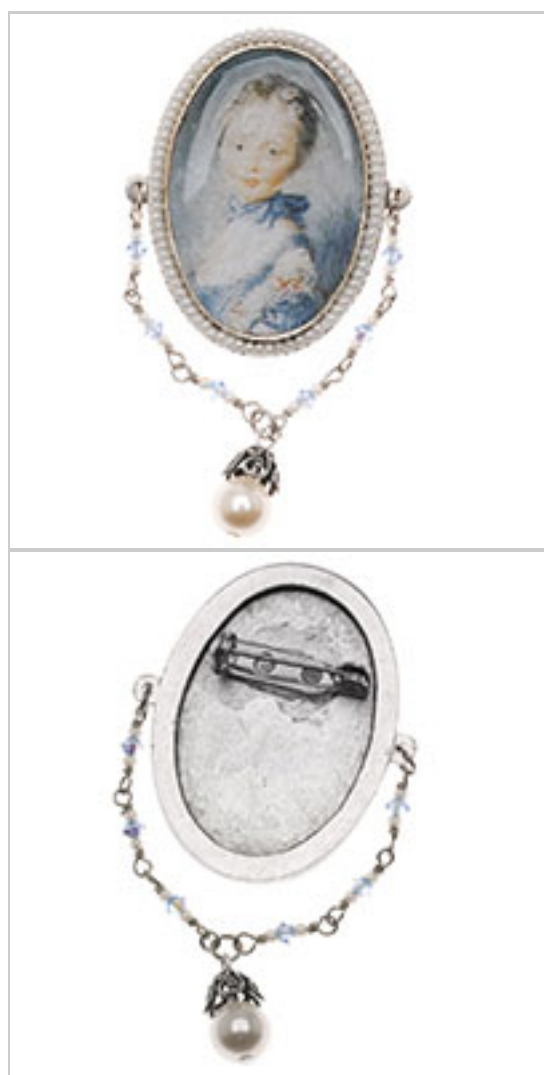


Portrait In Blue Brooch

Project C121

Designer: Andrea Morici

This brooch displays a charming miniature of an 18th Century girl surrounded with tiny pearlescent beads. Draped around the bottom of the brooch is an elegant chain of powder blue crystals, punctuated by a creamy Swarovski pearl drop.



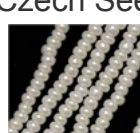
What You'll Need

Nunn Design Antiqued Silver Plated Pewter Oval Raised Bezel Pendant Link 1 1/2 inc



SKU: FCO-4521
Project uses 1 piece

Czech Seed Beads Size 11/0 Antiqued Cream Pearl (1 Hank/4000 Beads)



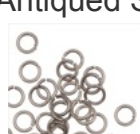
SKU: BCS-1172
Project uses 7 inches

SWAROVSKI ELEMENTS Crystal 5328 3mm Bicone Beads Light Sapphire AB (25 Beads)



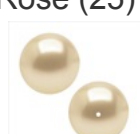
SKU: SWBB-1332
Project uses 6 pieces

Antiqued Silver Plated Open Jump Rings 4mm 21 Gauge (50)



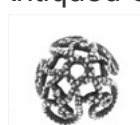
SKU: FJR-3092
Project uses 3 pieces

SWAROVSKI ELEMENTS Crystal Faux Round Pearls 5810 8mm Lt Cream Rose (25)



SKU: SWP-8003
Project uses 1 piece

Antiqued Silver Plated Filigree Spiral Bead Caps 8mm (4)



SKU: BMB-4302
Project uses 1 piece

Silver Tone Glue On Bar Pin Back 3/4 Inch (2cm) (24 Pieces)



SKU: FCO-9040
Project uses 1 piece

Tarnish Resistant Silver Color Copper Wire 24 Gauge 30 Yards (27.4 Meters)



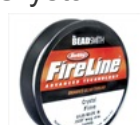
SKU: WNT-2430
Project uses 1 foot

Silver Plated Head Pins 1.5 Inches Long/21 Gauge (x50)



SKU: FHP-5323
Project uses 1 piece

Crystal Fireline Braided Beading Thread .008 Inch 50 Yd



SKU: XCR-1278
Project uses 8 inches

E6000 Industrial Strength Glue Adhesive (0.18 fl oz)



SKU: XTL-1054
Project uses 1 piece

Nunn Design Sealant Protectant 2 oz. - For Patera Findings (1)



SKU: XTL-1032
Project uses 1 piece

Nunn Design Glue Adhesive 2 oz. - For Patera Findings (1)



SKU: XTL-1031
Project uses 1 piece

Gel Du Soleil UV Epoxy Dimensional Gloss for Crafts & Jewelry 0.3 Fl. Oz.



SKU: XTL-1017
Project uses 1 piece

Specialized Tools

Xuron Sharp Flush Cutter Pliers - Wire/Soft Flex



SKU: XTL-5600

Beadsmith Jeweller's Micro Pliers Chain Nose Flat Nose



SKU: XTL-5511

Beadsmith Jewelry Fine Round Nose Micro Pliers



SKU: XTL-5514

Instructions:

1. Begin by finding an image to use for your pendant. Be creative. Look at scrapbooking materials or copyright-free images. If you choose to print out your own copyright-free image from the internet, be sure to have it printed on a color laser printer, as opposed to an inkjet printer. Inkjet images are water soluble and have a tendency to run when the glaze is applied. We have chosen a portrait of a young girl painted by the Rococo artist, Jean-Baptiste Perronneau.
2. After you find your image, carefully cut it out to the size of your Patera pendant. It is easiest to use McGill oval paper punch tool (XTL-7726) to cut your oval into the perfect size and shape to fit in the Patera finding, but you can also cut the image out by hand using sharp scissors or an X-Acto knife. It is best to err on the side of being too large, as you can always trim the image down. Depending on how thin the paper your image is on, you might want to first glue down a piece of plain white paper so that the image doesn't get too dark when you apply the glaze.
3. Using a soft paintbrush, paint a thin layer of the Nunn Design Sealant on the reverse of your image. Allow to dry fully. Repeat this step on the face of the image as well.
4. Once the sealant has dried, paint a thin layer of the Nunn Design Glue on the back of the image and press it firmly into the Patera finding. Allow the glue to dry.
5. Once you have your image glued in place, you must now apply the Gel Du Soleil Resin. Do not shake the bottle, but gently squeeze out enough resin to fill the pendant. Move the pendant around so that the resin spreads out to the edges, fully covering the image. At this time, if you notice that any bubbles have formed, pop them with a pin or needle. You don't want bubbles dried into your final design! Please watch our video on Gel Du Soleil for further instruction.
6. Place the pendant into the UV light (average drying time is 5 - 10 minutes), or if you don't have the UV light, place the pendant in a sunny spot and allow to dry (drying time slightly longer without using the UV light).
7. Once the Gel Du Soleil is dry, begin to make the pearlescent czech bead border. Cut a length of Fireline which is approximately eight inches long. Onto the Fireline, string enough cream pearl 11/0 Czech seed beads to fit comfortably around the rim of the portrait.
8. Tie a surgeon's knot in the Fireline, joining the two ends of the seed beads so that it forms a loop. Trim off excess Fireline.
9. Using a toothpick or a piece of wire, spread a thin line of E6000 around the outside of the rim on the brooch.
10. Snap your loop of seed beads into place around the rim, pressing them firmly into the E6000. Set this aside to dry.
11. Cut six pieces of 24 gauge Artistic wire at two inches long each.
12. Create two sets of three adjoining wire wrapped loop segments, each segment containing a small light sapphire AB Swarovski bicone with a pearlescent seed bead on either side of it.
13. Onto a headpin, thread an 8mm Swarovski pearl and a scalloped antiqued silver filigree bead cap. Create a simple wire loop at the top of the headpin and trim off excess wire.
14. Open three round antiqued silver jump rings.
15. Use one of the jump rings to attach one of the sets of wrapped wire loop segments to one of the loops on the side of the brooch. Use a second jump ring to attach the other set of wrapped wire loop segments to the loop on the other side of the brooch. Close both of these jump rings.
16. Use the third jump ring to join the bottom of the two segments of wrapped wire loops, and also to attach the 8mm Swarovski pearl drop to the two segments of wrapped wire loops. Close the last jump ring.
17. Finally, spread a small amount of E6000 on the pin back finding and press it firmly against the back of the brooch, horizontally and toward the top. Set the brooch aside to dry for at least twenty four hours before wearing.

Keywords: btq-vintagelook