

Zen Howlite Aromatherapy Bracelet

Project B807

Julie Bean

This lovely bracelet features howlite gemstone beads, lava beads, and beautiful TierraCast pewter beads. It also has an added benefit: you can add essential oils to the lava beads to enjoy aromatherapy and essential oils all day long.

What You'll Need

BeadSmith Magical Crimp Assortment, 2x2mm, Silver / Gold / Copper / Black Oxide, 500 Pieces

SKU: FCR-3108

Project uses 2 pieces



BeadSmith Flex-Rite Beading Wire, 7 Strand .02 Thick, 30 Foot Spool, Clear

SKU: XCR-1255

Project uses 20 inches



TierraCast Fine Silver Plated Pewter Round Spiral Beads 7.5mm (2)

SKU: BMB-3373

Project uses 5 pieces



Natural Lava Gemstone Beads, Round 4mm, 1 Strand, Black

SKU: SPLV-111

Project uses 24 pieces



Magnetic Clasp, Smooth Round Ball with Loops 6mm Diameter, 1 Set, Gunmetal Tone Brass

SKU: FCL-0739

Project uses 1 piece



Dakota Stones Gemstone Beads, White Howlite, Round 6mm, 8 Inch Strand

SKU: SPHO-102

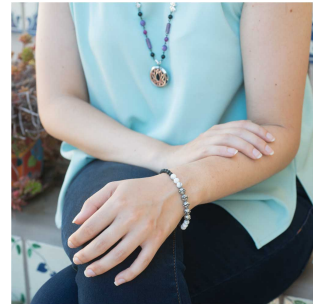
Project uses 6 pieces



Beadaholique Jewel Drops, Essential Oils for Jewelry and Aroma Therapy, Set of 6, 10ml bottles

SKU: XAR-010

Project uses 1 piece



Recommended Tools:

[XTL-7206] Magical Crimping Pliers, Transforms 2mm Tubes into Round Beads, 1 Piece,

[XTL-5600] Sharp Flush Cutter Pliers - For Cutting Beading Wire, 1 Piece, [XTL-3000] Bead

Stopper- Stop Beads Sliding Off Stringing Material

Instructions

The instructions make for an almost 7 1/2 inch bracelet when worn. To make it larger or smaller, simply adjust the number of lava beads you add to each side.

1. To make this bracelet, please watch the video: How to Make Your Own Aromatherapy Bracelet with Lava Beads.
2. The above video will show you how to make this project from start to finish including how to crimp the crimp beads.

SAFETY WARNING: Essential oils for external use only. Other than aromatherapy, dilute with a carrier oil. For topical use, rub a very small diluted amount on the inside of your elbow area to test for any allergic reaction before use. Discontinue use if any allergic reaction occurs. Keep out of the reach of pets. Essential oils can be potentially toxic to pets at certain concentrations. Avoid contact with eyes, keep out of the reach of children. If pregnant, consult with your health care provider before use.