

Sistine Bracelet

Project B8005

Alexandra Smith

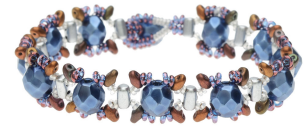
This bracelet captures shimmering blue Czech fire polish beads in a weave of lustrous purple Toho seed beads and rainbow glazed MiniDuos. The design combines a color palette subtly reminiscent of Michaelangelo's painted ceiling.

What You'll Need

Czech Glass MiniDuo, 2-Hole Seed Beads 2x4mm, 8 Gram Tube, Crystal Violet Rainbow

SKU: BCT-112

Project uses 1 tube



Toho Demi Round Seed Beads, Thin 8/0 (3mm) Size, 7.4 Grams, 201 Gold Lustered Amethyst

SKU: DRO-0005

Project uses 1 piece



Toho Demi Round Seed Beads, Thin 11/0 (2.2mm) Size, 7.8 Grams, PF21F PermaFinish Frosted Silver Lined Crystal

SKU: DRH-0043

Project uses 1 piece



Czech Fire Polished Glass Beads 8mm Round Full Pearlized - Navy Blue (25)

SKU: BCP-10412

Project uses 12 pieces



Czech Glass Matubo, Cylindrical 2-Hole Rulla Beads 3x5mm, 22 Gram Tube, Crystal Bronze Aluminum

SKU: BCT-710

Project uses 12 pieces



FireLine Braided Beading Thread, 4lb Test and 0.005 Thick, 15 Yards, Smoke Gray

SKU: XCR-1285

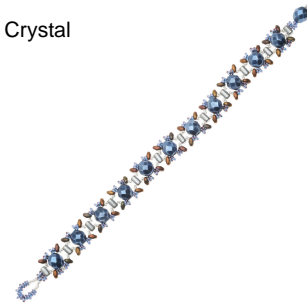
Project uses 4 feet



Recommended Tools:

[XTL-0109] Beadsmith Extra-Fine Thread Snips - Cuts Textiles, Yarn, And More!-, [XTL-3006]

Beadsmith English Beading Needles Size 12 (4 Needles)



Instructions

This bracelet measures 8 inches total. To modify the length, adjust the number of units woven.

1. Cut a length of 4 feet of Fireline thread or as long as you are comfortable working with and thread a size 12 beading needle. As you work, you may need to tie off and add new thread.
2. String on one 8mm bead and one 11/0 Demi Round seed bead, placing them at the center of your thread. Double your needle back through the 8mm bead and pull the thread taut so that the Demi Round rests flush against the hole of the 8mm bead, and both sides of thread are the same length.
3. Thread a second needle onto the other end of the thread.

4. Send both needles through one 8/0 Demi Round, then onto each thread string two more 8/0 Demi Rounds.
5. Thread on a 2 hole Rulla bead by sending each needle through the two separate holes, both headed in the same direction away from your 8mm end bead.
6. Onto each side, string two 11/0 Demi Rounds, one MiniDuo, and two 8/0 Demi Rounds. Then criss cross each needle through one single 8mm bead, heading in opposite directions.
7. Onto each side, string two 8/0 Demi Rounds, one MiniDuo, and two 11/0 Demi Rounds.
8. Repeat steps 5-7 ten more times, or follow the pattern until your bracelet is the desired length (keeping in mind that the beaded clasp loop will add an additional half inch).
9. Thread both needles in the same direction through the two holes of your last Rulla bead. Set one needle aside, and string the remainder of the beads using only one needle.
10. You are now ready to create the loop end of your clasp. Onto the needle you're still using, string on three 8/0 Demi Rounds, five 11/0 Demi Rounds, fifteen 8/0 Demi Rounds, and five more 11/0 Demi Rounds.
11. Double the needle back through the 8/0 Demi Round positioned third up from your last Rulla bead (see photo for reference). Then string on two more 8/0 Demi Rounds. Finish off this portion of the bracelet by tying both sides of thread into a secure overhand knot. Enjoy your bracelet!