

# Wisteria Centerline Cuff

## Project B800

*Julie Bean*

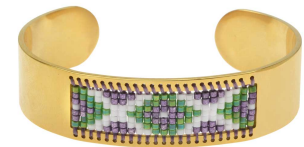
This modern and sleek gold tone cuff bracelet features a woven beaded focal design created in a fresh purple, green, and white color palette. To create the design, you will weave the beads in rows, attaching them to the holes along the interior cut out of the cuff.

## What You'll Need

Centerline Beadable Cuff Bracelet, with Rectangular Cutout and Holes 16x58mm, 1 Piece, Gold Tone

SKU: JB-0006

Project uses 1 piece



Miyuki Delica Seed Beads, 11/0 Size, 7.2 Grams, Opaque Green AB DB163

SKU: DB-163

Project uses 54 beads



Miyuki Delica Seed Beads, 11/0 Size, 6.6 Grams, Opaque Chalk White DB200

SKU: DB-200

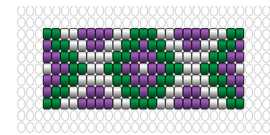
Project uses 55 beads



Miyuki Delica Seed Beads, 11/0 Size, 7.2 Grams, Galvanized Silver Frost Eggplant Purple DB1185

SKU: DB-1185

Project uses 52 beads



NYMO Nylon Beading Thread Size D for Delica Beads Light Purple 64YD (58 Meters)

SKU: XCR-8910

Project uses 1 piece



G S Hypo Cement Precise Applicator Essential!

SKU: XTL-1001

Project uses 1 piece



### Recommended Tools:

[XTL-3166] BeadSmith Big Eye Beading Needles 2.125 Inches Long - Pack Of 4, [XTL-5700]

Fiskars 5 Precision Tip Scissors - Super Sharp

## Instructions

1. To make this bracelet, please watch the video: How to Add Beads to a Centerline Cuff.
2. In the course of the video you will learn how to cut your threads and create a double strand of Nymo beading thread, how to start your beading, how to add your bead rows, and how to tie off and finish your ends.
3. The last step is adding just a dab of glue over your knots and trimming your tails. Wait for the glue to dry before wearing.
4. Enjoy!

## Loom Pattern

