

Abigail Bracelet

Project B759

Julie Bean

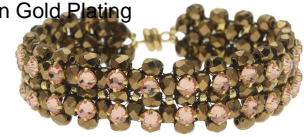
This dazzling bracelet features two rows of right angle weave embellished with gorgeous sparkling rose montees. Wear this bracelet to dress up a casual outfit or wear it for a night on the town.

What You'll Need

Preciosa Rose Montee Beads, Czech VIVA12 Rhinestones in Cup Settings SS16, 24 Pieces, Crystal Apricot on Gold Plating

SKU: BCZ-716

Project uses 48 pieces



22K Gold Plated Magnetic Clasps 6 x 4.5mm (4 Sets)

SKU: FCL-6807

Project uses 1 piece



Czech Fire Polished Glass Beads 4mm Round - Metallic Bronze (50)

SKU: BCP-10336

Project uses 122 pieces



Toho Round Seed Beads 11/0 PF557 'Galvanized Starlight' 8g

SKU: JSK-0277

Project uses 27 pieces



FireLine Braided Beading Thread, 6lb Test and 0.006 Thick, 15 Yard Mini Spool, Smoke Gray

SKU: XCR-1289

Project uses 1 piece



Recommended Tools:

[XTL-3006] Beadsmith English Beading Needles Size 12 (4 Needles), [XTL-5700] Fiskars 5

Precision Tip Scissors - Super Sharp



Instructions

This bracelet measures 6.25" long and uses all 48 rose montees in the supply list. If you want to make it longer, please make sure to order more rose montees and more Czech Glass round beads if need be. It takes about 20 of the Czech Glass beads for every inch of the bracelet.

1. Begin this project by cutting approximately 6 feet of thread and placing a stopper bead on the end. Leave yourself a short tail that is at least 8 inches long so you can weave it into your bead work when you are all finished. You will need to add more thread at some point, to see how to do that, please watch the video: [How to Tie off and Add New Thread in Right Angle Weave](#).
2. Create a row of Right Angle Weave that is 24 units long. Create a second row on top of the first row so you now have a piece of beadwork that is 24 units long and 2 units high. If you are not familiar with how to do Right Angle Weave, please watch the video [here](#).
3. Next watch the video: [How to Embellish Right Angle Weave with Rose Montee Beads](#). From what you learned in the video, stitch a Rose Montee into the

center of each of your clusters. Also, when you get to either end of the bracelet, between the two czech glass beads on each end, add a seed bead, the loop from the magnetic clasp, and another seed bead. Please see the photo for reference as to how this looks. Do this on both sides of your bracelet.

4. The final step is to run a row of seed beads down the center of your bracelet. Look at your bracelet and notice the little "holes" between the Czech glass beads in the center of your bracelet (with the two rows of rose montees on the sides). Position your needle so that it is starting on a middle end Czech glass bead, go through the bead and come up in that "hole". String on a single seed bead and now go through the next Czech glass bead over. Keep repeating until you get to the end of your bracelet.

5. Tie off your thread and weave in your tail. Also go back and tie off and weave in your initial starting thread and any loose tails you might have from adding thread.

6. Enjoy!