

Herringbone Bubbles Bracelet

Project B7024

Designer: Rachel Zaimont

Toho seed beads in two sizes create a dimensional bubble effect in this sleek and fun herringbone bracelet.

What You'll Need

Toho Round Seed Beads 11/0 121 Opaque Lustered White 8 Gram Tube

SKU: JSK-0048

Project uses 1 tube



Toho Round Seed Beads 11/0 146 'Ceylon Glacier' 8 Gram Tube

SKU: JSK-0063

Project uses 1 tube



Toho Seed Beads, Round 8/0 Semi Glazed, 8 Gram Tube, Soft Blue

SKU: JSH-0406

Project uses 1 tube



Toho Round Seed Beads 8/0 166DF 'Transparent Rainbow Frosted Lt Tanzanite' 8 Gram Tube

SKU: JSH-0189

Project uses 1 tube



Crystal Fireline Braided Beading Thread .006 Inch 50 Yd

SKU: XCR-1275

Project uses 25 feet



Silver Plated Tube Clasp 26mm Four Rings Strands (2)

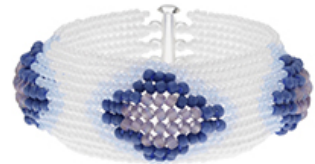
SKU: FCL-5504

Project uses 1 piece



Recommended Tools:

[XTL-3006] Beadsmith English Beading Needles Size 12 (4 Needles), [XTL-0109] Beadsmith Extra-Fine Thread Snips - Cuts Textiles, Yarn, And More!



Instructions

These instructions will make a 6 inch bracelet. For a longer or shorter bracelet, adjust the number of rows of pearl white seed beads you weave on both

sides of the bracelet.

1. Begin by watching our video on how to weave flat herringbone stitch.
2. Based on the technique shown in the video, cut a length of Fireline thread as long as you are comfortable working with and thread a size 12 needle. Weave a ladder stitch base row 12 beads long using the 11/0 pearl white seed beads.
3. You will be following the weaving pattern shown in the photo, and your base row from the previous step will serve as the bottom row of the pattern. Work your way up, using the 11/0 pearl white beads, the 11/0 light blue beads, the 8/0 dark blue beads and the 8/0 purple beads. Incorporating the larger size seed beads will cause your bead weaving to "bubble" up, and then taper down as you return to using the smaller beads. During your weaving, you will need to add additional thread; watch our video on how to tie off and add new thread for instructions.
4. After you complete the pattern, repeat it twice more so you have three herringbone bubbles completed.
5. Once you finish weaving the last two rows of pearl white beads at the end of your third repetition of the pattern, weave an additional 10 rows of white beads onto the end of your bracelet.
6. You will now attach half of your tube clasp. The clasp has four loops, which will align with the middle four columns of herringbone stitch.
7. With your needle exiting the first bead in the top row, pick up one white seed bead and sew down through the next bead over, so one bead sits above the two beads of your first herringbone column.
8. Sew up through the next bead over in the top row. Add two white beads to your needle, and then pass your needle through the first loop of your clasp from back to front. Then pick up two more white beads and sew down through the next bead over, so the loop of the clasp sits above the next herringbone column in the bracelet. Sew back up through your beaded loop to reinforce it.
9. Repeat step 8, attaching the second loop of your clasp.
10. Repeat step 8 twice more, except on the last two loops of the clasp, pass your needle through the loop from front to back.
11. Sew up through the next bead over. Pick up one white seed bead and sew down through the next bead, so one bead sits above the two beads of your last herringbone column. Tie off and weave in your thread tail.
12. Now move to the other side of your bracelet. Repeat steps 5-11, adding an additional 10 rows of pearl white beads and attaching the second half of the tube clasp. Tie off and weave in your thread tail.
13. All finished!

Loom Pattern

