

## Radiant Spring Wire Wrapped Beaded Cuff Bracelet

**Project B699** [Skill Level: Advanced]  
*Designer: Julie Bean*

Row after row of dazzling SWAROVSKI ELEMENTS bicones in soft springtime hues have been carefully wire wrapped onto a hollow gold cuff bracelet. The design is fresh, modern, and pretty.



### What You'll Need

SWAROVSKI ELEMENTS Crystal 5328 3mm Bicone Beads Violet Opal (25 Beads)



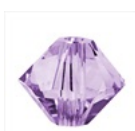
SKU: SWBB-1398  
Project uses 84 pieces

SWAROVSKI ELEMENTS Crystal 5328 3mm Bicone Beads Golden Shadow (25 Beads)



SKU: SWBB-1308  
Project uses 72 pieces

SWAROVSKI ELEMENTS Crystal 5328 3mm Bicone Beads Violet (25 Beads)



SKU: SWBB-1391  
Project uses 72 pieces

Solid Brass Square Wire Open Cuff Bracelet Base 12.7mm (0.5 Inch) Wide - 1 Piece



SKU: JB-2596  
Project uses 1 piece

Tarnish Resistant Gold Color Copper Wire 28 Gauge 40 Yards (36.5 Meters)



SKU: WNT-2833  
Project uses 1 spool

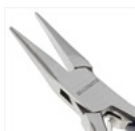
### Specialized Tools

Xuron Sharp Flush Cutter Pliers - Wire/Soft Flex



SKU: XTL-5600

Beadsmith Jeweller's Micro Pliers Chain Nose Flat Nose



SKU: XTL-5511

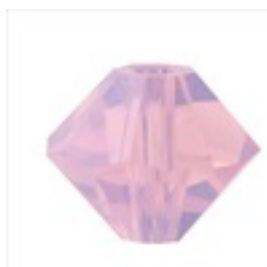
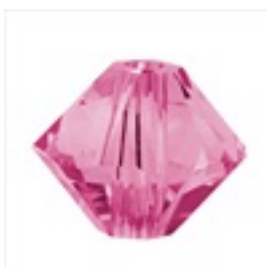
### Instructions:

1. Begin by watching the video: How to Wire Wrap Rows of Beads onto a Form.
2. For this particular project, you are going to slightly alter the technique shown in the video. Instead of making your side wraps, having your wire come from across the top of your form, adding the beads, and swooping the wire under your form to start your anchoring wraps, you are going to make your side wraps, have your wire come from across the top of your form, add your beads, and then swoop it over to the other side and again wrap it around the top of the form. Then for the next row the wire will come from under the form, you will add your beads and swoop it to the other side and wrap it under the form again. Basically instead of each row being an over-under wire pattern, it will be an over-over, under-under, over-over, etc. pattern. This will give you the effect of a double row of beads, one on the front side and one on the backside of the cuff.
3. Cut a as long of a length of wire that you are comfortable with. Please note you will definitely need to add more wire as you go and will do so simply by finishing the wire end of the existing piece by wrapping it 4-5 times around the cuff edge (where you would have wrapped it anyways in the normal course of adding bead rows), trimming the tail, then adding a new piece of wire by wrapping over your existing wraps from the last piece of wire, trimming its short tail, and continuing with your pattern of adding bead rows.
4. Based upon what you learned in the video, and referring to the project photo, begin your wire wrapping on one side edge of the cuff bracelet, right next to where the sharp side curve is. Wire wrap that entire end curve so you come to stop directly across from where you started the wrapping (across the hollow part of the cuff).
5. String on 4 violet opal crystal bicone beads, draw the wire across the hollow midsection of the cuff to a point directly across from your wrappings, and make 5 more tight wraps. See photo.
6. Repeat the previous step to make your second row. Continue this process until you have the following rows of beads (including the 2 you already did and with each row consisting of 4 bicones): 3 rows violet opal, 6 rows crystal golden shadow, 6 rows violet, 6 rows violet opal, 6 rows crystal golden shadow, 6 rows violet, 6 rows violet opal, 6 rows crystal golden shadow, 6 rows violet, and 6 rows violet opal. Do not worry if your wrappings are spaced a little different than mine and you end up with less than 6 rows of violet opal at the end.
7. Once all your beads are wrapped into place, wire wrap the sharp curved end of the cuff. Trim off any excess wire.
8. Enjoy!

### Variations

Create this same bracelet design with your favorite colors of 3mm bicones.

When substituting in items, pay attention to sizes and styles to make sure all your pieces will fit together.



**Keywords:** cuff bracelet, SWAROVSKI ELEMENTS, beaded cuff, btq-lux, btq-stylewatch