

European Style SWAROVSKI ELEMENTS February Birthstone Bracelet

Project B671 [Skill Level: Beginner]
Designer: Julie Bean

This lovely European Style keepsake bracelet features sparkling SWAROVSKI ELEMENTS crystal beads in February's birthstone color amethyst. This project would make a wonderful gift for a loved one.



What You'll Need

Sterling Silver Charm Bracelet For Pandora Beads 7 Inch Screw End Lobster Clasp



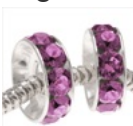
SKU: AXC-9445
Project uses 1 piece

SWAROVSKI ELEMENTS Crystal 5928 BeCharmed Helix Bead - 4.5mm Lg. Hole Amethyst x1



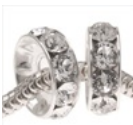
SKU: SWBB-5009
Project uses 3 pieces

SWAROVSKI ELEMENTS Crystal Silver Plated BeCharmed Rondelle 4.5mm Large Hole Amethyst (2)



SKU: SWBB-5095
Project uses 4 pieces

SWAROVSKI ELEMENTS Crystal Silver Plated BeCharmed Rondelle 4.5mm Large Hole Crystal (2)



SKU: SWBB-5080
Project uses 2 pieces

SWAROVSKI ELEMENTS Crystal 5928 BeCharmed Helix Bead - 4.5mm Hole Fits Pandora Light Amethyst x1



SKU: SWBB-5012
Project uses 2 pieces

SWAROVSKI ELEMENTS Crystal 5948 BeCharmed Briolette Bead - 4.5mm Hole Crystal x1



SKU: SWBB-5050
Project uses 2 pieces

Instructions:

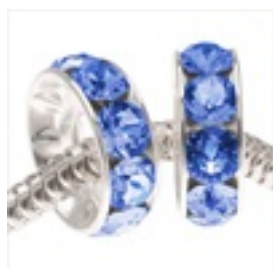
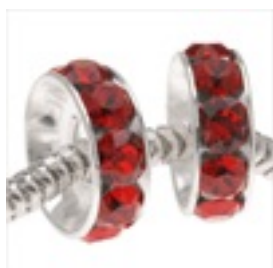
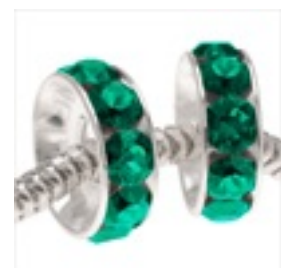
NOTE: The beads on this bracelet are on the wide side, which means they will pull the actual bracelet away from your wrist a little. Aesthetically this looks fine but it does mean you will need to go up a 1/2" size on the bracelet you select. For instance, I usually wear a 6.5" European Style Bracelet but for this project I selected a 7" one.

1. Unscrew the end of screw end of your sterling silver European Style bracelet.
2. Place onto the bracelet your beads in the following order: 1 SWAROVSKI ELEMENTS BeCharmed briolette bead in crystal, 1 SWAROVSKI ELEMENTS BeCharmed rondelle in crystal, 1 SWAROVSKI ELEMENTS BeCharmed helix bead in light amethyst, 1 SWAROVSKI ELEMENTS BeCharmed rondelle in amethyst, 1 SWAROVSKI ELEMENTS BeCharmed helix bead in amethyst, 1 SWAROVSKI ELEMENTS BeCharmed rondelle in amethyst, 1 SWAROVSKI ELEMENTS BeCharmed helix bead in amethyst, 1 SWAROVSKI ELEMENTS BeCharmed rondelle in amethyst, 1 SWAROVSKI ELEMENTS BeCharmed helix bead in amethyst, 1 SWAROVSKI ELEMENTS BeCharmed rondelle in amethyst, 1 SWAROVSKI ELEMENTS BeCharmed helix bead in light amethyst, 1 SWAROVSKI ELEMENTS BeCharmed rondelle in crystal, and 1 SWAROVSKI ELEMENTS BeCharmed briolette bead in crystal.
3. Screw the end cap back onto your bracelet.
4. May you enjoy this bracelet for years to come.

Variations

Not born in February? We have a wide selection of birthstone colored beads for you to choose from. If making a European Style bracelet, just make sure the bead's interior hole is large enough to fit onto your bracelet.

When substituting in items, pay attention to sizes and styles to make sure all your pieces will fit together.



Keywords: pandora, large hole bead, European Style, Swarovski Elements, birthstone, birthday, amethyst, February, btq-allthatglitters