

## Peace and Joy European Style Bangle Bracelet

**Project B659** [Skill Level: Beginner]

Designer: Julie Bean

This elegant holiday-inspired European Style bangle bracelet is an instant keepsake. Pick out beads that are meaningful to you or add a new bead every year. This bracelet would also make a wonderful and personal gift.



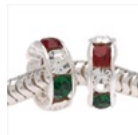
### What You'll Need

22K Gold Plated Bangle Cuff Bracelet For Pandora or Biagi Beads Screw End Large



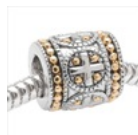
SKU: AXC-9416  
Project uses 1 piece

Silver Plated w/ Christmas Red Green Czech Crystal Large Hole Rondelles - Fits Pandora 8mm (2)



SKU: BCZ-1009  
Project uses 8 pieces

22K Gold And Silver Tone Large Hole Bead 'Greek Cross' - Fits Pandora Style



SKU: BMB-8389  
Project uses 2 pieces

Silver Tone Large Hole Bead Snowflake Pattern Adorned With SWAROVSKI ELEMENTS crystal - Fits Pandora (1)



SKU: BMB-8205  
Project uses 4 pieces

22K Gold Plated Message Bead Love Faith Pray Peace Joy Hope - Fits Pandora (1)



SKU: BMB-8282  
Project uses 1 piece

### Instructions:

No tools required!

1. Unscrew the end ball of your gold plated bangle bracelet.
2. Slide onto the bracelet 1 large-hole rondelle with Christmas colored crystals, 1 silver-tone large hole bead with snowflake pattern, another crystal rondelle, 1 gold and silver toned "Greek cross" bead, another crystal rondelle, another snowflake bead, another rondelle, and 1 gold plated message bead. For the second half of your bracelet, make it a mirror image of the first.
3. Replace the screw-on ball at the end of your bracelet.
4. Happy Holidays!

### Variations

Choose from a wide variety of European Style beads to add to or change the look of this bracelet.

When substituting in items, pay attention to sizes and styles to make sure all your pieces will fit together.



**Keywords:** pandora, christmas, holiday, cross, red, green, bangle bracelet