

Deco Drops Bracelet

Project B657

Designer: Julie Bean

Displaying a distinct nod to the Art Deco period, this sparkling bracelet uses right-angle weave to connect hematite and jet colored Czech glass beads which are then accented by jet glass drops. This bracelet is also very comfortable to wear on the wrist.

What You'll Need

Czech Fire Polish Glass Beads 4mm Round 'Hematite' (50)

SKU: BCP-3485

Project uses 94 pieces



Czech Fire Polish Glass Beads 4mm Round Jet Black (50)

SKU: BCP-3490

Project uses 70 pieces



Czech Glass Beads 9mm Teardrop Jet Black (50)

SKU: BCP-0920

Project uses 22 pieces



Wildfire Thermal Bonded Beading Thread .006 Inch - Black - 50 Yd

SKU: XCR-8935

Project uses 16 feet



Gun Metal Plated 2 Strand Tube Clasps - 16.5mm (4)

SKU: FCL-5561

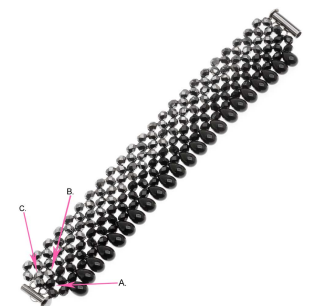
Project uses 1 piece



Recommended Tools:

[XTL-5700] Fiskars 5 Precision Tip Scissors - Super Sharp, [XTL-3004] Beadsmith English

Beading Needles Assortment So Handy



Instructions

Note, after you complete your first row of right angle weave, wrap the beadwork around your wrist to see if it is a comfortable fit. This pattern makes a little over 6" bracelet (including clasp) and is meant to be worn snug. If you need to, add some more units of right angle weave to your pattern to make the bracelet fit.

1. To begin, please watch the video on how to right-angle weave.
2. Cut a comfortable amount of Wildfire thread and thread it onto your needle. I prefer to use no more than 6 feet at a time personally. If you need to tie off your thread and add more at some point, please see the video [HERE](#) on how to do this. Also place a stopper bead on the end of your thread.
3. Based upon what you learned in the video, right angle weave 23 columns of units (a unit is a 4 bead right angle weave cluster) using Czech fire polished glass 4mm round beads in hematite. Now create a second row of right angle woven beads on top of the first. For this row, each 4 cluster should consist of 3 hematite beads (left, right, and bottom) and then the "top" bead should be a Czech fire polished glass 4mm round beads in jet black. Stitch a third row using all black beads.
4. If you have at least a foot of thread left at this point, then proceed to the next step. If not, tie off your thread and add a new one into your beadwork.
5. Work your thread into your beadwork until you exit the last black bead on the last row. You want to be exiting facing in towards your beading, not out towards the exterior edge. String 1 Czech glass 9mm teardrop bead in black. Pull this bead all the way down your thread until it rests up against the black bead you exited. Now thread your needle through the black bead on the other side. You are basically just sandwiching the drop bead between 2 round black beads on the long edge of your bracelet. Repeat this step until you have attached a total of 22 drop beads. Tie off your thread and incorporate the tail into the beading. See photo if needed.
6. Thread 2 feet of thread onto a needle and work it into your beading until you exit the bead labeled A in the diagram photo #4. Next thread your needle through the top loop on one half of your tube clasp. Now go back through bead A. Next, go through bead B and bead C. Now thread your needle through the bottom loop on your tube clasp. Now go back through bead C, B, and A. Repeat the same sequence you did in the beginning of this step to reinforce your threads attaching your clasp. After you have completed attaching your clasp, work your thread into your beadwork and tie off your thread.
7. Repeat the previous step on the other side of your necklace attaching the other half of your clasp - just make sure it is oriented properly to fit into the previously attached clasp half on the other side of your bracelet.
8. Have a wonderful time wearing this pretty bracelet!