

Urban Gauntlet Bracelet

Project B625
Designer: Julie Bean

Bold and fierce, this striking bracelet combines the elegant element of Swarovski Crystals and the industrial strength of heavy gauge textured cable chain. The look is runway chic.



What You'll Need

Antiqued Silver Plated Heavy Textured Double Round Link Cable Chain 11mm Bulk By The Foot



SKU: CHA-9860
Project uses 3 feet

Gun Metal Tone Tube Clasp 31mm Five Rings Strands (2)



SKU: FCL-5508
Project uses 1 piece

Black Finish Pewter Open Jump Rings 7.7mm 16 Gauge (25)



SKU: FJR-6001
Project uses 5 pieces

SWAROVSKI ELEMENTS Crystal 6685 Graphic Pendant 19mm 'Black Diamond' (1)



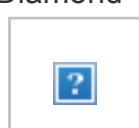
SKU: SWBB-4902
Project uses 1 piece

SWAROVSKI ELEMENTS Crystal 6685 Graphic Pendant 19mm 'Jet' Black (1)



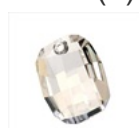
SKU: SWBB-4910
Project uses 1 piece

SWAROVSKI ELEMENTS Crystal 6685 Graphic Pendant 28mm 'Black Diamond' (1)



SKU: SWBB-4952
Project uses 1 piece

SWAROVSKI ELEMENTS Crystal 6685 Graphic Pendant 28mm Crystal Silver Shade (1)



SKU: SWBB-4957
Project uses 1 piece

SWAROVSKI ELEMENTS Crystal 6685 Graphic Pendant 38mm 'Jet' Black (1)



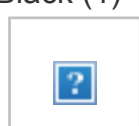
SKU: SWBB-4966
Project uses 1 piece

SWAROVSKI ELEMENTS Avant-Garde Crystal Pendant 6620 20x11mm Crystal (1)



SKU: SWC-9100
Project uses 1 piece

SWAROVSKI ELEMENTS Avant-Garde Crystal Pendant 6620 20X11mm Jet Black (1)



SKU: SWC-9115
Project uses 1 piece

Artistic Craft Wire Silver Plated Gun Metal Finish 24 Gauge - 10 Yards



SKU: WCR-2441
Project uses 8 inches

Specialized Tools

Beadsmith Jewelry Fine Round Nose Micro Pliers



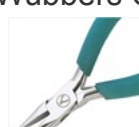
SKU: XTL-5514

Xuron Sharp Flush Cutter Pliers - Wire/Soft Flex



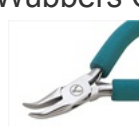
SKU: XTL-5600

Wubbers Classic Series Chain Nose Quality Jeweller's Pliers



SKU: XTL-0033

Wubbers Classic Series Bent Chain Nose Quality Jeweller's Pliers



SKU: XTL-0036

Instructions:

The chain we are using in this project is very strong and extremely hard to cut with cutters. This particular chain also happens to consist of open chain links which can be opened and used just like jump rings. Therefore, to separate lengths of chain, we are going to open the individual links at the desired "cut" point instead of physically cutting it. You must use two STRONG pairs of chain nose pliers to open these links. You want this bracelet to be relatively snug on your wrist. The bracelet instructions will make a 7.25" bracelet. If you desire a longer length, just add the inches you need in the first step. Make sure you always have an odd number of links in your chain length (23, 25, 27, etc.)

- To begin, lay out your chain against a ruler and measure 6.5" (which is 23 sets of double chain links). At the 6.5" point, use two pairs of chain nose pliers to open and remove the double links (the 24th set of double chain links). Do not discard these "jump rings" but keep for later use. Measure two more identical 6.5" lengths and separate the links where needed so you have 3 "cut" units of chain. Set aside.
- Pick up your "non-cut" length of chain, and starting on one end, open and remove 24 links (so 12 double links).
- Please watch the video on How To Create Faux Chain Maille. Based upon what you learned in the video, attach all three of your "cut" chain lengths.
- On one end of your bracelet, attach an open link to the end double links of all three chains. Close each link back up.
- Attach another open link to each of the three links you just connected. Close the links back up.
- Separate your tube clasp into two halves and open 10 16 gauge black finish jump rings.
- Connect one of the 16 gauge jump rings to the end loop on your tube clasp as well as the end link on your bracelet. Connect a 2nd 16 gauge jump ring to the same end link on your bracelet as well as the 2nd loop on your tube clasp. Connect a 3rd jump ring to the middle link on your bracelet end as well as the 3rd loop on your tube clasp. Connect a 4th jump ring to the other end link on your bracelet as well as the 4th loop on your tube clasp.
- Finally, connect a 5th jump ring to the same end link as in the previous step as well as the 5th loop on your tube clasp.
- Go to the other side of your bracelet, and attach the other half of the clasp the same way you attached the first. Make sure the clasp is properly oriented so that the halves will fit together properly and also make sure you go through the double links when connecting the jump rings on this side of the bracelet.
- Cut an 8" length of 24 gauge hematite colored artistic wire. Thread it through the hole in the Swarovski Crystal 38mm Graphic Pendant in Jet Black, with 2" sticking out one end and 6" out the other. Bend both wires up and then cross the 2" wire over the base of the 6" wire, right up against the top of the pendant. Make several tight wraps with the 2" wire and then snip off the excess with flush cutters, leaving the 6" wire untouched. If there is a rough wire edge remaining, press into the wrappings using your chain nose pliers.
- Using your round nose pliers and the 6" wire piece, create a loop right after the wraps from the previous step.
- Take the 6" wire and wrap it snugly around the previous wrappings. Make many nice even wraps, covering your previous wrappings and creating a finished look. When done, snip off excess wire with flush cutters and press the rough end into the wrappings with your chain nose pliers.
- Time to attach the Swarovski Crystals! You are going to be attaching all the Swarovski crystal pendants to the bracelet using 16 gauge jump rings. All of your crystals you will attach, via jump rings, to the body of your bracelet up near the first half of the clasp you attached, specifically, the first two rows of links.
- To attach a crystal, thread an open jump ring through the hole at the top and then link the jump ring to one of the links in the bracelet. Close the jump ring. Do this for all your crystals, spreading them out along the width of your bracelet, near the clasp. For the crystal where you created the wrapped wire loop, simply thread the jump ring through the loop you created and then attach to one of the chain links.
- All done! Enjoy your fabulous new bracelet!

Variations

For an alteration to this design, use a gold color chain and different colored crystals.

When substituting in items, pay attention to sizes and styles to make sure all your pieces will fit together.

