

Summer Rose Bracelet

Project B602

Designer: Julie Bean

As seen and demonstrated in our 5th episode of our "Learn to Bead" video series, this simple and elegant bracelet is a wonderful first project for the beginner beader. Learn how to string beads and use crimp tubes to attach a clasp.



What You'll Need

Beadalon Silver Plated Crimp Tubes 1.8mm (75 Beads)



SKU: FCR-1215
Project uses 2 pieces

Beadalon Wire Standard Bright 7 Strand .015 Inch / 30 Feet

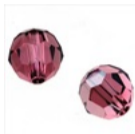


SKU: XCR-67513
Project uses 12 inches



SKU:
Project uses 5 pieces

SWAROVSKI ELEMENTS Crystal 5000 6mm Round Beads Rose Satin (10)



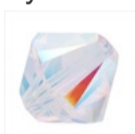
SKU: SWC-06117
Project uses 8 pieces

TierraCast Fine Silver Plated Pewter Scalloped Bead Caps 3.5mm (12)



SKU: BMB-3287
Project uses 10 pieces

SWAROVSKI ELEMENTS Crystal Beads, 5328 Bicone, 4mm, 24 Pieces, Crystal AB 2X



SKU: SWBI-1402
Project uses 12 pieces

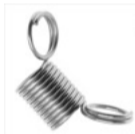
Silver Plated Toggle Clasps 12mm (5 Sets)



SKU: FCL-3032
Project uses 1 piece

Specialized Tools

Bead Stopper- Stop Beads Sliding Off Stringing Material



SKU: XTL-3000

Standard Size Beading Crimping Pliers (For 2x2mm & 2x1mm Crimp Beads)



SKU: XTL-5200

Xuron Sharp Flush Cutter Pliers - Wire/Soft Flex



SKU: XTL-5600

Instructions:

1. Cut a 12 inch length of your beading wire. Place a bead stopper on one end leaving a tail of about 2 inches.

2. String onto your wire:

- o 1 crimp tube
- o 1 Swarovski 6mm rose round bead.

Now string and repeat the following pattern 5 times:

- o 1 Swarovski 4mm crystal bicone bead
- o 1 Swarovski 6mm rose round bead
- o 1 Swarovski 4mm crystal bicone bead
- o 1 scalloped bead cap
- o 1 cultured coin pearl in heliotrope purple
- o 1 scalloped bead cap

3. Now string onto your beading wire:

- o 1 Swarovski 4mm crystal bicone bead
- o 1 Swarovski 6mm rose round bead
- o 1 Swarovski 4mm crystal bicone bead
- o 1 Swarovski 6mm rose round bead
- o 1 crimp tube

4. Thread one end of your wire through the loop on one section of your toggle clasp. Thread the wire back through your crimp tube and a couple of the beads next to it. Pull snug and crimp the crimp bead. Cut off excess beading wire.

5. Remove the bead stopper on the other end of your strung beads and repeat the above step with the other half of your toggle clasp.

6. Have fun beading!