

El Tropico Bangle

Project B6018 [Skill Level: Beginner]

Designer: Suki Song

Take a break and relax with this tropical themed-bangle.



What You'll Need

Expandable Charm Bangle Bracelet, Double Bar, 1 Bracelet, Bright Silver



SKU: JB-2810
Project uses 1 piece

Silver Plated and Enameled Charm, Lime Half 16x12.5x7mm, 1 Piece, Green



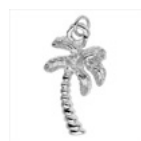
SKU: PND-10469
Project uses 1 piece

Silver Plated and Enameled Charm, Margarita W/ Lime 18x14.7x5.2mm, 1 Piece, Green



SKU: PND-10461
Project uses 1 piece

Silver Plated Lightweight Charm, Palm Tree 20.7x11.3x3.4mm, 1 Piece, Silver



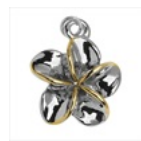
SKU: PND-10487
Project uses 1 piece

Silver Plated Handpainted Light Charm, Tropical Drink W/ Lime 16.3x10x4.3mm, 1 Piece, Orange



SKU: PND-10462
Project uses 1 piece

Light Gold Plated Lightweight Charm, Plumeria Flower 19x16x3.5mm, 1 Piece, Silver



SKU: PND-10471
Project uses 1 piece

Silver Plated Open Jump Rings 6mm 19 Gauge (x100)



SKU: FJR-5160
Project uses 5 pieces

Specialized Tools

Beadsmith Jewelry Fine Round Nose Micro Pliers



SKU: XTL-5514

Beadsmith Jeweller's Micro Pliers Chain Nose Flat Nose



SKU: XTL-5511

Instructions:

1. Using your chain nose pliers, open a silver plated jump ring and slide on the loop from the flower charm. Attach it onto the wire bangle, and close the jump ring. See photo for placement assistance.
2. Repeat the first step, but with the orange drink charm.
3. Repeat the first step, but with the palm tree charm.
4. Repeat the first step, but with the green drink charm.
5. Repeat the first step, but with the lime charm.
6. You're all done!

Variations

Choose your favorite tropical charm to personalize your bangle:

When substituting in items, pay attention to sizes and styles to make sure all your pieces will fit together.



Keywords: vacation, island, hawaii,, btq-banglesandcuffs