

Kitties! Peyote Bracelet

Project B6015

Designer: Suki Song

Show your love for kittens with this adorable peyote bracelet!

What You'll Need

Miyuki Delica Seed Beads 10/0 'Opaque Cream' DBM0732 7.2 Grams

SKU: DBM-0732

Project uses 1 tube



Miyuki Delica Seed Beads 10/0 Opaque Salmon AB Pink DBM0207 8 GR

SKU: DBM-0207

Project uses 1 tube



Miyuki Delica Seed Beads 10/0 'Matte Black' DBM0310 8 GR

SKU: DBM-0310

Project uses 1 tube



Ruby Gemstone Drops Gold Vermeil Wire Wrapped Chain 3mm Rondelles

SKU: CHX-1043

Project uses 13 inches



Fireline Braided Beading Thread .006 In. - Smoke Grey - 15 Yards

SKU: XCR-1285

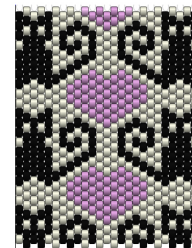
Project uses 1 spool



Recommended Tools:

[XTL-5700] Fiskars 5 Precision Tip Scissors - Super Sharp, [XTL-3006] Beadsmith English

Beading Needles Size 12 (4 Needles)



Instructions

These instructions make a 6 1/2 inch bracelet. To adjust the length, simply continue the pattern of the bracelet. Please note you may need to purchase

additional beads and gemstone if you would like a longer bracelet.

1. Before you begin, watch the video: How to do Flat Odd Count Peyote Stitch. Note: As you work, you will need to tie off and add new thread.
2. From what you learned in the video, follow the pattern chart provided. You will need to leave a long tail in the beginning, because you will use this thread to later attach the clasp.
3. Complete approximately 6 1/4" of the pattern. Again, leave a long tail at the end to attach the clasp.
4. The clasp will add approximately 1/4" to your bead weaving. To attach the clasp, first separate the two ends. Be sure that they are facing the correct way when you attach them. Please see photo for reference.
5. Taking the thread from the end of your bead weaving, go down through the bead directly below that last bead. Thread up diagonally through the next three beads to be coming out the fourth bead in the top row.
6. Thread down through the adjacent bead and weave along the thread path and come up through the sixth bead.
7. Thread through the second hole of the clasp. And back down through the sixth bead creating a loop. Follow this loop thread path twice more for security.
8. Thread down through the adjacent bead and weave along the thread path and come up through the eighth bead.
9. Thread through the third hole of the clasp. And back down to the eighth bead creating a loop. Follow this loop thread path twice more for security.
10. Thread down through the adjacent bead and weave along the thread path and come up through the thirteenth bead.
11. Thread through the fourth hole of the clasp. And back down to the thirteenth bead creating a loop. Follow this loop thread path twice more for security.
12. Thread down through the adjacent bead and weave along the thread path and come up through the fifteenth bead.
13. Thread through the fifth hole of the clasp. And back down through the fifteenth bead creating a loop. Follow this loop thread path twice more for security.
14. Thread down through the adjacent bead and weave along the thread path and come up through the eighteenth bead.
15. Thread through the sixth hole of the clasp. And back down through the eighteenth bead creating a loop. Follow this loop thread path twice more for security.
16. Thread down through the adjacent bead and weave along the thread path and come up through the twenty-first bead.
17. Thread through the seventh hole of the clasp. And back down through the twenty-first bead creating a loop. Follow this loop thread path twice more for security.
18. Take your thread and follow back through the thread path to tie off and weave in your thread.
19. You will repeat this process for the other side of the bracelet to attach the other end of the clasp.
20. Take your gemstone chain and cut two lengths of 6 1/4" (or more, depending on the desired length of your bracelet).
21. For this next step please watch the video, How to Add Chain to Peyote Bead Weaving.
22. Follow the instruction in the video and weave your gemstone chain onto one edge of your bracelet.
23. Repeat the previous step for the other edge of your bracelet. Tie off and weave in your threads.
24. All done!

Loom Pattern

