

Fit for a Queen Adjustable Bangle

Project B3060 [Skill Level: Beginner]

Designer: *Karlin Jones*

Make this trendy bangle bracelet featuring a sparkly Crystal SWAROVSKI ELEMENTS fancy stone and a bright silver Nunn Design Crown charm. This is an effortlessly classic accessory.



What You'll Need

Adjustable Wire Bangle Bracelet, Add a Charm, 1 Bracelet, Silver Plated



SKU: JB-2578
Project uses 1 piece

Nunn Design Charm, 20x24.5mm Crown In Circle Bezel, 1 Piece, Bright Silver



SKU: PND-05178
Project uses 1 piece

E6000 Industrial Strength Glue Adhesive (0.18 fl oz)



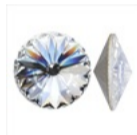
SKU: XTL-1054
Project uses 1 piece

Silver Tone Pendant Setting For SWAROVSKI ELEMENTS 12mm Rivoli (1)



SKU: FCO-4406
Project uses 1 piece

SWAROVSKI ELEMENTS Crystal Fancy Stones, 1122 Rivoli, 12mm, 4 Pieces, Crystal SF



SKU: SWC-9300
Project uses 1 piece

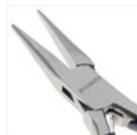
Silver Plated Open Jump Rings 8mm - 18 Gauge (100)



SKU: FJR-5180
Project uses 2 pieces

Specialized Tools

Beadsmith Jeweller's Micro Pliers Chain Nose Flat Nose



SKU: XTL-5511

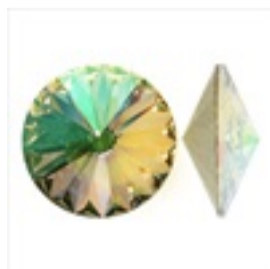
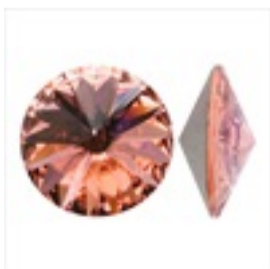
Instructions:

1. Begin by placing a dab of E6000 glue onto the center of your silver tone bezel setting. Carefully place your Crystal SWAROVSKI ELEMENTS fancy stone down onto the glue, faceted side up. Set aside to dry.
2. Using your chain nose pliers, open a jump ring silver plated jump ring and slide on the loop from your Nunn Design crown charm. Also slide on the bent wire loop that is on the left side of your adjustable wire bangle. See photo for placement assistance.
3. Next, open up another jump ring and slide on the loop from your rivoli bezel setting. Also slide you jump ring onto the bottom bar that is in the front of your bangle and close.
4. That's it!

Variations

Look through a selection of 12mm SWAROVSKI ELEMENTS fancy stones and choose your favorite.

When substituting in items, pay attention to sizes and styles to make sure all your pieces will fit together.



Keywords: swarovski elements, rivoli, fancy stone, btq-nunn design , btq-stylewatch