

## European Style SWAROVSKI ELEMENTS Christmas Bracelet

**Project B3024** [Skill Level: Beginner]  
*Designer: Karlin Jones*

Make this heirloom quality accessory using a sterling silver European Style bracelet and gorgeous SWAROVSKI ELEMENTS BeCharmed crystal beads in an assortment of Christmas-inspired colors. The beads sparkle brilliantly and look very impressive when combined together.



### What You'll Need

SWAROVSKI ELEMENTS Crystal BeCharmed Baguette Pave Bead Indian Siam - European Style Large 4.5mm Hole (1)



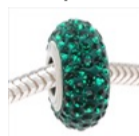
SKU: SWBB-5167  
Project uses 2 pieces

SWAROVSKI ELEMENTS Crystal BeCharmed Baguette Pave Bead Crystal - European Style Large 4.5mm Hole (1)



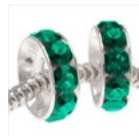
SKU: SWBB-5160  
Project uses 2 pieces

SWAROVSKI ELEMENTS Crystal BeCharmed Pave Slim Bead Emerald - European Style Large 4.5mm Hole (1)



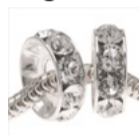
SKU: SWBB-5290  
Project uses 2 pieces

SWAROVSKI ELEMENTS Crystal Silver Plated BeCharmed Rondelle 4.5mm Large Hole Bead Emerald (2)



SKU: SWBB-5084  
Project uses 2 pieces

SWAROVSKI ELEMENTS Crystal Silver Plated BeCharmed Rondelle 4.5mm Large Hole Bead Crystal (2)



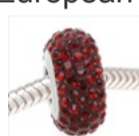
SKU: SWBB-5080  
Project uses 2 pieces

SWAROVSKI ELEMENTS Crystal BeCharmed Square Pave Bead Siam - European Style Large 4.5mm Hole (1)



SKU: SWBB-5143  
Project uses 1 piece

SWAROVSKI ELEMENTS Crystal BeCharmed Pave Slim Bead Siam - European Style Large 4.5mm Hole (1)



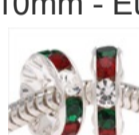
SKU: SWBB-5297  
Project uses 1 piece

SWAROVSKI ELEMENTS Crystal BeCharmed Pave Squares Slim Bead Siam - European Style Large 4.5mm Hole (1)



SKU: SWBB-5192  
Project uses 1 piece

Silver Plated Christmas Red & Green Crystals Large Hole Rondelle Beads 10mm - European Style (2)



SKU: BCZ-1016  
Project uses 2 pieces

Sterling Silver Charm Bracelet For European Style Large Hole Beads 3mm / 7.5 Inch With Smart Bead Stoppers



SKU: AXC-9473  
Project uses 1 piece



### Instructions:

No tools required!

- Your bracelet has 2 smart beads already attached: one close to the lobster clasp and one close to the other side. Slide the smart bead near the non-lobster clasp side off of the bracelet. Set aside for now.
- Slide onto your bracelet these SWAROVSKI ELEMENTS BeCharmed beads in the following order: 1 Siam baguette bead, 1 Christmas rondelle, 1 Crystal baguette bead, 1 Emerald round pave slim bead, 1 Crystal rondelle, 1 Siam round pave slim bead, 1 Emerald rondelle, 1 large Siam square pave bead, 1 Emerald rondelle, 1 Siam square slim bead, 1 Crystal rondelle, 1 Emerald round pave slim bead, 1 Crystal baguette bead, 1 Christmas rondelle, and 1 Siam baguette bead.
- Slide the smart bead that you removed in the first step back onto the bracelet. Look at your beads and make sure they are centered on the bracelet, if they are not, just scoot them and the smart beads into the position that you want.
- Your bracelet is done.

### Variations

Try making this same design in a different color scheme with our wide selection of SWAROVSKI ELEMENTS BeCharmed pave beads.

When substituting in items, pay attention to sizes and styles to make sure all your pieces will fit together.



**Keywords:** SWAROVSKI ELEMENTS, pave beads, BeCharmed, bracelet, European style, btq-christmas, btq-allthatglitters