

European Style Swarovski Crystal November Birthstone Bracelet

Project B3019 [Skill Level: Beginner]
Designer: Karlin Jones

Make this heirloom quality accessory using a sterling silver European Style bracelet and gorgeous Swarovski BeCharmed crystal beads in Topaz. The beads sparkle brilliantly and look very impressive when combined together.



What You'll Need

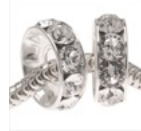
Swarovski Crystal, 80301 BeCharmed Baguette Pave European Style Lg Hole Bead 10mm, 1 Pc, Topaz
SKU: SWBB-5177
Project uses 1 piece



Swarovski Crystal, 80301 BeCharmed Baguette Pave European Style Lg Hole Bead 10mm, 1 Pc, Crystal
SKU: SWBB-5160
Project uses 2 pieces



Swarovski Crystal, 77512 BeCharmed Rondelle 4.5mm Large Hole Beads 12mm, 2 Pcs, Crystal
SKU: SWBB-5080
Project uses 6 pieces



Sterling Silver Charm Bracelet For European Style Large Hole Beads 3mm / 7.5 Inch With Smart Bead Stoppers
SKU: AXC-9473
Project uses 1 piece



Swarovski Crystal, 80101 BeCharmed Pave European Style Lg Hole Bead 14mm, 1 Pc, Topaz
SKU: SWBB-5122
Project uses 2 pieces



Swarovski Crystal, 80201 BeCharmed Square Pave European Style Lg Hole Bead 14mm, 1 Pc, Topaz
SKU: SWBB-5150
Project uses 2 pieces



Instructions:

Note: No tools required!

1. Your bracelet has 2 smart beads already attached: one close to the lobster clasp and one close to the other side. Slide the smart bead near the non-lobster clasp side off of the bracelet. Set aside for now.
2. Slide onto your bracelet the Swarovski BeCharmed beads in the following order: 1 baguette pave bead in Crystal, 1 Crystal rondelle, 1 pave bead in Topaz, another Crystal rondelle, 1 square pave bead in Topaz, another Crystal rondelle, 1 baguette pave bead in Topaz, another Crystal rondelle, 1 square pave bead in Topaz, another rondelle in Crystal, 1 pave bead in Topaz, another Crystal rondelle and 1 baguette pave bead in Crystal.
3. Slide the smart bead that you removed in the first step back onto the bracelet. Look at your beads and make sure they are centered on the bracelet, if they are not, just scoot them and the smart beads into the position that you want.
4. Your bracelet is done.

Variations

Try making this same design in a different color scheme with our wide selection of Swarovski BeCharmed beads.

When substituting in items, pay attention to sizes and styles to make sure all your pieces will fit together.



Keywords: SWAROVSKI ELEMENTS, pave beads, BeCharmed, bracelet, European style, topaz, btq-allthatglitters, btq-lux