

Right Angle Weave Blues Bracelet

Project B2461

Kat Silvia

This design features an ombre style fade of crystals as they form perfect little right angle weave units. This bracelet is finished off with a tiny magnetic clasp for a delicate look. Choose your favorite colors to play with to make this design your own.

What You'll Need

Magnetic Clasp, 6x4.5mm, 4 Clasp Sets, Silver Plated

SKU: FCL-6808

Project uses 1 piece



Preciosa Czech Crystal, Bicone Bead 4mm, 36 Pieces, Crystal AB

SKU: PCC-1401

Project uses 22 pieces



Preciosa Czech Crystal, Bicone Bead 4mm, 36 Pieces, Aquamarine AB

SKU: PCC-1412

Project uses 20 pieces



Preciosa Czech Crystal, Bicone Bead 4mm, 36 Pieces, Light Sapphire AB

SKU: PCC-1459

Project uses 20 pieces



Preciosa Czech Crystal, Bicone Bead 4mm, 36 Pieces, Sapphire AB

SKU: PCC-1457

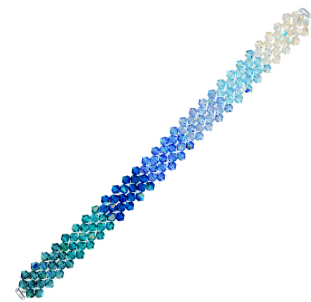
Project uses 20 pieces



Preciosa Czech Crystal, Bicone Bead 4mm, 36 Pieces, Capri Blue AB

SKU: PCC-1417

Project uses 20 pieces



Preciosa Czech Crystal, Bicone Bead 4mm, 36 Pieces, Blue Zircon AB

SKU: PCC-1414

Project uses 20 pieces



Preciosa Czech Crystal, Bicone Bead 4mm, 36 Pieces, Indicolite AB

SKU: PCC-1489

Project uses 20 pieces



FireLine Braided Beading Thread, 4lb Test and 0.005 Thick, 15 Yards, Crystal Clear

SKU: XCR-1280

Project uses 6 Feet



Recommended Tools:

[XTL-3006] The Beadsmith English Beading Needles Size 12 (4 Needles), [XTL-0373] Tulip

Premium Scissors, Gold Handle 5 Inch, 1 Pair

Instructions

This design measures approximately 6.25 inches. To modify the length, simply adjust the length woven.

1. Please begin by watching our video: How to Do Right Angle Weave. From what you learned in the video, thread your needle with a length of thread you are comfortable working with. I recommend starting with 6 to 8 feet. Please note that you can always work with a smaller length of thread and tie it off and start a new thread.
2. Leaving a tail of 8 to 12 inches, begin your right angle weave with 4 units of crystal ab, then aquamarine ab, light sapphire ab, sapphire ab, capri blue ab, blue zircon ab, and indicolite ab,. Count your units by counting the top bead along the bracelet or follow along with the photo of the project.
3. Next please watch our video: How to Attach a Magnetic Clasp to Right Angle Weave. In this video you will learn how attach the clasp and how to tie off and weave in your threads.