

# Cafe Latte Bracelet

## Project B2402

*Kat Silvia*

Inspired by the warmth of a coffeehouse, this loom bracelet is designed with a cozy sweater in mind.

## What You'll Need

Miyuki Round Seed Beads, 11/0 Size, 8.5 Gram Tube, #419 Opaque Chocolate Brown

SKU: DMRR-0419

Project uses 1 Tube



Miyuki Round Seed Beads, 11/0 Size, 8.5 Gram Tube, #2022 Matte Dark Cream

SKU: DMRR-2022

Project uses 1 Tube



NYMO Nylon Beading Thread Size D for Delica Beads Brown 64YD (58 Meters)

SKU: XCR-8919

Project uses 1 Spool



E6000 Industrial Strength Glue Adhesive (0.18 fl oz)

SKU: XTL-1054

Project uses 1 piece



Beadalon Slide Connectors, with Extension Clasps for Multi-Strand Projects 26x5mm, 1 Set, Gold

SKU: FCL-9309

Project uses 1 piece



### Recommended Tools:

[XTL-3021] Tulip Loom Work Beading Needles 90x0.5mm - 3 Needles, [XTL-6119] Beadalon

Jewel Loom Kit - Weave Necklaces Bracelets And More!, [XTL-0373] Tulip Premium Scissors,

Gold Handle 5 Inch, 1 Pair



## Instructions

You will also need a toothpick or scrap of wire for this project.

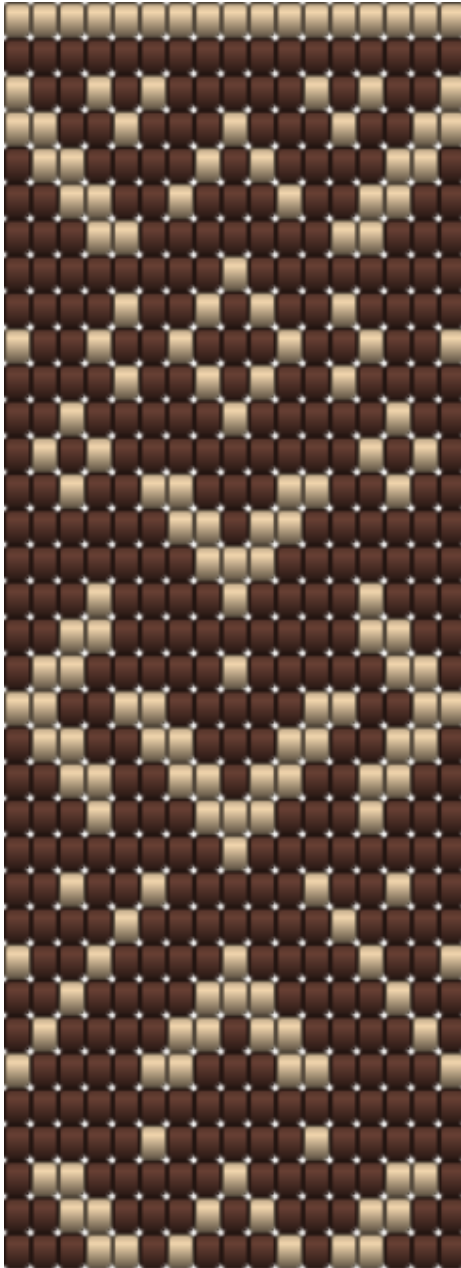
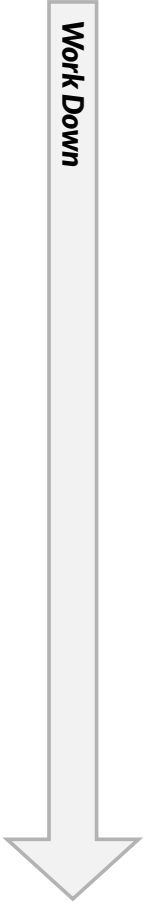
1. This project was modeled after one of our exclusive kits. Please watch our video: [How to Make the Loom Bracelet Kits by Beadaholique](#). In this video you will see how to set up your loom, weave the pattern and finish it off. Please see our [Printer Friendly PDF](#) for the full color pattern of the Cafe Latte Bracelet and follow along with the video to complete this design.

Start Here



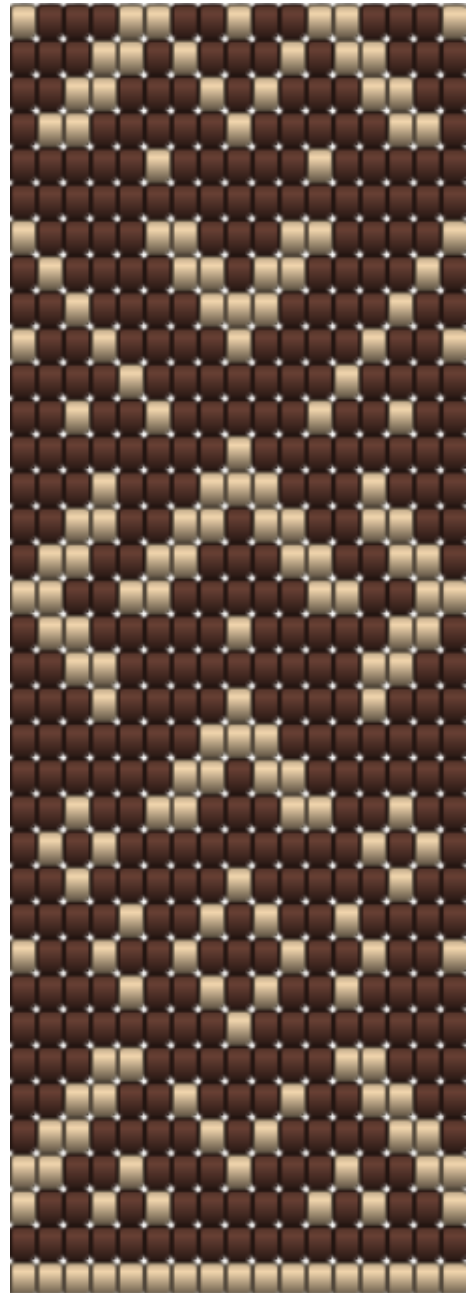
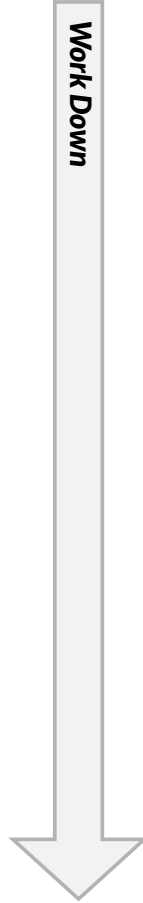
**A**

Work Down



**B**

Work Down



End Here

