

# Sunny Paradise Loom Bracelet

## Project B2394

*Kat Silvia*

Sunny and modern, this geometric loom bracelet has a bright pop of yellow and blue among the classic mod black and white color combo.

## What You'll Need

Exclusive Beadaholique Designer Palette, Toho Seed Bead Mix, Round 11/0, 32 Grams, Sunny Paradise

SKU: JK-0085

Project uses 1 piece



NYMO Nylon Beading Thread Size D for Delica Beads White 64YD (58 Meters)

SKU: XCR-8901

Project uses 1 piece



Beadalon Slide Connectors, with Extension Clasps for Multi-Strand Projects 26x5mm, 1 Set, Silver

SKU: FCL-9312

Project uses 1 piece



E6000 Industrial Strength Glue Adhesive (0.18 fl oz)

SKU: XTL-1054

Project uses 1 piece



### Recommended Tools:

[XTL-6119] Beadalon Jewel Loom Kit - Weave Necklaces Bracelets And More!, [XTL-5511]

Beadsmith Jeweller's Micro Pliers Chain Nose Flat Nose, [XTL-9920] Beadaholique Bead Mat,

12.5x9.25 Inches, 1 Piece, [XTL-3021] Tulip Loom Work Beading Needles 90x0.5mm - 3

Needles



## Instructions

The beaded pattern measures 6.25 inches. Wearing the adjustable clasp on the smallest setting will give you a 7 inch bracelet and go up to a 8.75 inch bracelet at the largest setting. If you would like a smaller bracelet, please adjust the beading pattern accordingly. You will also need a toothpick or scrap of wire for this project.

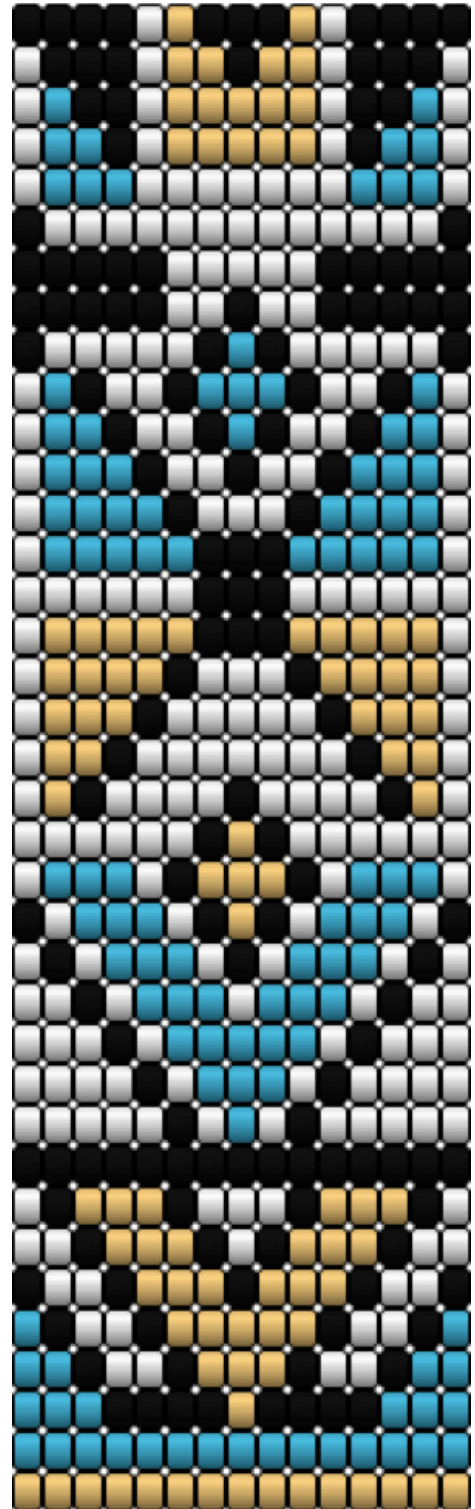
1. To see how to complete this project from start to finish, please watch our video: [How to Make the Beaded Loom Bracelet Kits by Beadaholique](#). In this video you will see how to set up your Jewel Loom, follow along with the pattern and finish the bracelet. Please see our [Printer Friendly PDF for Full Color Beading Pattern](#). We recommend waiting at least 24 hours before wearing to allow the glue to fully set.

Start Here

A



B



End Here