

Caribbean Getaway Peyote Bracelet

Project B2362

Kat Silvia

Get swept away on the island breeze of the Caribbean with this duo of odd count peyote stitch bracelets.

What You'll Need

Miyuki Delica Seed Beads, 11/0 Size, 6.8 Grams, Opaque Turquoise Matte AB DB878

SKU: DB-878

Project uses 1 Tube



Miyuki Delica Seed Beads, 11/0 Size, 7.2 Grams, Duracoat Galvanized Gold DB1832

SKU: DB-1832

Project uses 1 Tube



Miyuki Delica Seed Beads, 11/0 Size, 7.2 Grams, Luminous Poppy Red DB2051

SKU: DB-2051

Project uses 1 Tube



Miyuki Delica 11/0 Seed Bead Matte White Db351 (6.6 Gram Tube)

SKU: DB-351

Project uses 1 Tube



22K Gold Plated Magnetic Clasps 6mm x 8mm (3)

SKU: FCL-6682

Project uses 2 pieces



FireLine Braided Beading Thread, 4lb Test and 0.005 Thick, 15 Yards, Crystal Clear

SKU: XCR-1280

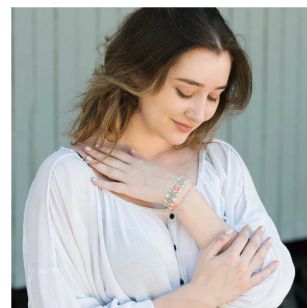
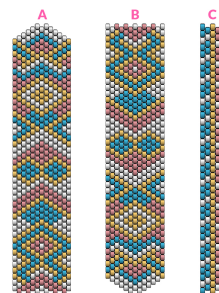
Project uses 1 Spool



Recommended Tools:

[XTL-3006] Beadsmith English Beading Needles Size 12 (4 Needles), [XTL-0373] Tulip

Premium Scissors, Gold Handle 5 Inch, 1 Pair



Instructions

This bracelet measures approximately 6.25 inches. To modify the length, you will need to modify the pattern to suit the overall size.

1. If you are unfamiliar with Odd Count Peyote, please watch our video [here](#).
2. From what you learned in the video, follow the pattern image by beginning at the widest part of the A pattern that begins with the gold bead at the top. Do not worry about the tapering, you will complete that later. Working down follow the pattern A and continue to pattern B.
3. Once you reach the end of the pattern you will begin to taper the ends as seen in a similar project video [here](#). From what you learned in the video, taper the peyote stitch while following along with the pattern. You will notice for this one that there is no final bead at the taper. When you get to that point add one white bead, string the end through the loop of the clasp, add another white bead and go down through the other side of the bracelet. I recommend working your thread around to go through the thread path once again to reinforce the clasp.
4. Tie off and weave in your tail.
5. Repeat the above process on the beginning side of the bracelet.
6. For the thinner bracelet you will follow the above process. Follow pattern C and repeat until you reach your desired length (for a 6.25 inch bracelet it will be about 6 inches of bead weaving).
7. To attach the clasp, you will continue to follow the colors of the pattern. Come out of the coral bead at the end, toward the center, add one coral bead, add the loop of the clasp, add one teal bead and go down into the bracelet. Reinforce the clasp, tie off your threads, and repeat on the other side.

