

## Dance in the Dark Bracelet

### Project B2277

*Kat Silvia*

For this design, Swarovski Crystal Rivolis in TierraCast settings prove to be an elegant, quick and easy way to add sparkle to any outfit.

### What You'll Need

TierraCast Connector Link Setting, 11mm Rivoli, 2 Pieces, 22K Gold Plated

SKU: FCO-3830

Project uses 8 pieces



Swarovski Crystal, 1122 Rivoli Fancy Stone ss47 11mm, 4 Pieces, Crystal Rainbow Dark

SKU: SWCR-1195

Project uses 8 pieces



TierraCast Pewter, Small Open Jump Rings 5.4mm, 50 Pieces, 22K Gold Plated

SKU: FJR-9117

Project uses 9 pieces



22K Gold Plated Magnetic Clasps 6mm x 8mm (3)

SKU: FCL-6682

Project uses 1 piece



E6000 Industrial Strength Glue Adhesive (0.18 fl oz)

SKU: XTL-1054

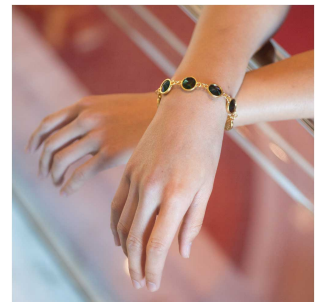
Project uses 1 piece



### Recommended Tools:

[XTL-5511] Beadsmith Jeweller's Micro Pliers Chain Nose Flat Nose, [XTL-5514] Beadsmith

Jewelry Fine Round Nose Micro Pliers



## Instructions

This bracelet measures 6.5". To remove length, simply remove links. To add length you will need to purchase additional crystals and settings.

1. Begin by adding a dab of glue to the well of one setting. Place a crystal into the setting and set aside. Repeat for all eight crystals.
2. Open one jump ring and attach one setting to another setting. Close the jump ring. Repeat and continue until you have attached all the settings.
3. Open another jump ring and attach one end of the magnetic clasp to one end of the bracelet. Repeat on the other side.
4. It is recommend that you wait at least 24 hour for the glue to fully set before wearing.