

## Cairo Cuff

### Project B2267

*Kat Silvia*

This cuff was inspired by the colors of the Kings and Queens of Egypt, and with the jewel toned cabochons, this brass cuff comes to life.

### What You'll Need

Vintage Lucite Plastic Oval Domed Cabochon - Ruby Red / Foiled 18x25mm (6)

SKU: BCV-424

Project uses 1 piece



Vintage Lucite Plastic Round Domed Cabochon - Sapphire / Foiled 18mm (8)

SKU: BCV-392

Project uses 2 pieces



Vintage Lucite Plastic Round Domed Cabochon - Amethyst / Foiled 13mm (12)

SKU: BCV-373

Project uses 2 pieces



Solid Brass Flat Cuff Bracelet Base 38mm (1.5 Inch) Wide (1 Piece)

SKU: JB-2573

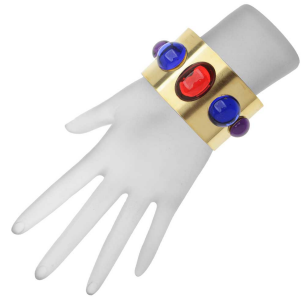
Project uses 1 piece



E6000 Industrial Strength Glue Adhesive (0.18 fl oz)

SKU: XTL-1054

Project uses 1 piece



### Instructions

No tools required!

1. Place a dab of E6000 on to the back of the red cabochon. Place on the center front of the cuff (please see photo for reference).
2. Then add a dab of glue to the back of the blue cabochon and place just to the left of the red cabochon. Repeat to mirror on the other side.
3. Then add a dab of glue to the back of the purple cabochon and place just to the left of the blue cabochon. Repeat to mirror on the other side.
4. Allow the cuff to dry for at least 24 hours before wearing.