

Candy Cane Bracelet

Project B2015

Designer: Kat Silvia

This peyote bracelet looks like shiny peppermint candy. Work one up as a gift, or wear it yourself. It will surely have you feeling festive this Christmas season!

What You'll Need

Miyuki Delica Seed Beads 10/0 Opaque Red DBM0723 8 GR

SKU: DBM-0723

Project uses 1 tube



Miyuki Delica Seed Beads 10/0 Opaque White Pearl DBM0201 8 GR

SKU: DBM-0201

Project uses 1 tube



Silver Plated Tube Clasp 26mm Four Rings Strands (2)

SKU: FCL-5504

Project uses 1 piece



Wildfire Thermal Bonded Beading Thread .006 Inch - White- 50 Yd

SKU: XCR-8933

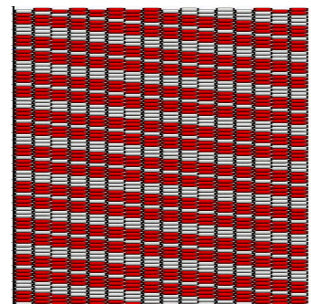
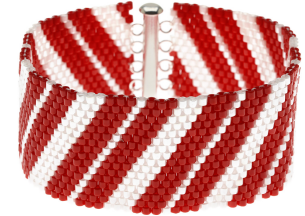
Project uses 1 spool



Recommended Tools:

[XTL-3006] Beadsmith English Beading Needles Size 12 (4 Needles), [XTL-0106] BeadSmith

Cordless Thread Zap II Thread Burner Tool



Instructions

Before you begin this project watch our video [How to Flat Even-Count Peyote](#). Another video that you may find helpful is [How to Tie Off and Add New Thread in Bead Weaving](#).

1. Thread a size 12 beading needle with a length of white Wildfire beading thread. Work with as long of a piece at a time as you are comfortable working with. You'll need to tie off and add new thread as you work.
2. Using size 10/0 Miyuki Delicas in opaque red and opaque white pearl, weave a piece of flat even count peyote with the beads placed according to the pattern shown in the photos. This pattern will give you a bracelet that is 7". The wonderful thing about this pattern is that you can repeat it or cut it short depending on how long you want your bracelet. The clasp featured in this design will add just over a 1/4" to your bracelet.
3. Before you begin your first row leave an extra long tail so that it will be easier to attach the clasp later. A tail of about 2 feet should be plenty.
4. To attach the clasp, start at the beginning of your beadwork. Using the tail that you left at the beginning.
5. Taking your thread, weave back through the first white and red beads and catch the first ring of the clasp.
6. Weave down through the next three red beads, come up and catch the second loop, weave back through the next two red beads and one white bead.
7. Come up and catch the third loop, and go back down through the next two white beads.
8. Come up and catch the fourth loop and back through the final white bead in that second row.
9. Now you will turn around your thread, and weave back through the process, all the way back to the first loop to reinforce your clasp. Tie off your thread. By the end you should have two threads thru each loop.
10. To attach the other side of the clasp to the other side of the bracelet, simply repeat this process. Note that the color of the beads you will thread through to attach this side of the clasp may be different than the other side. Make sure to keep the clasp placement even. It may also help to keep the clasp together make sure that you are not sewing it in backwards.
11. You will want to keep a good tension on the thread to keep the clasp secure.

Loom Pattern

