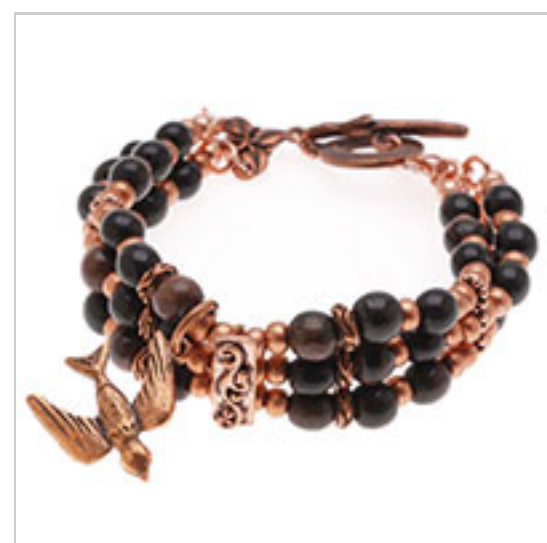


Little Wooden Bird Bracelet

Project B131

Designer: Andrea Morici

This multi-strand copper and wood bracelet goes very nicely with our My Wooden Heart Necklace.



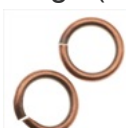
What You'll Need

Beadalon Wire Satin Copper 19 Strand .018 Inch / 30Ft



SKU: XCR-69883
Project uses 3 feet

Nunn Design Antiqued Copper Plated Pewter Open Jump Rings 8.5mm 16 Gauge (20)



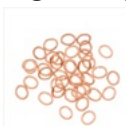
SKU: FJR-2053
Project uses 1 piece

Bright Copper Closed Jump Rings Heavy 5mm 18 Gauge (25)



SKU: FJR-4083
Project uses 6 pieces

Bright Copper Open Jump Rings Oval 4x5mm 20 Gauge (50)



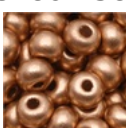
SKU: FJR-3945
Project uses 8 pieces

Round Wood Beads Dark Brown Tiger Eye 6-7mm /15 Inch Strand



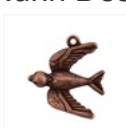
SKU: BWD-0061
Project uses 36 pieces

Czech Seed Beads 6/0 Light Copper Supra Metallic (1 Ounce)



SKU: BCS-6162
Project uses 60 pieces

Nunn Design Antiqued Copper Plated Pewter Bird Charm 22mm



SKU: PND-6756
Project uses 1 piece

Fine Copper Plated Pewter Woodland Spacer Beads 6mm (10)



SKU: BMB-3892
Project uses 6 pieces

Bali Copper Triple Daisy Beads Strand Spacer Bars (10)



SKU: FCO-2234
Project uses 2 pieces

Antiqued Copper 3mm Bead Triple Strand Spacer Bar 6mm (x2)



SKU: FCO-1521
Project uses 1 piece



SKU:
Project uses 2 pieces

Genuine Copper Crimp Beads 2 x 2mm (x50)



SKU: FCR-1531
Project uses 6 pieces

Bright Copper Crimp Bead Covers 4mm (x20)



SKU: FCR-1010
Project uses 6 pieces

Nunn Design Copper Plated Pewter Round Toggle Clasp Ring 11mm (1)



SKU: FCL-7511
Project uses 1 piece

Nunn Design Antiqued. Copper Plated Branch Toggle Clasp Bar 25mm



SKU: FCL-7507
Project uses 1 piece

Instructions:

- Using a pair of flush cutters, cut three pieces of beading wire at a foot long each. Secure one end of each strand using a Bead Stopper.
- You will be stringing all three strands identically, so you may want to string all three strands simultaneously. Just note that if you do string all three strands at the same time, there is more of a risk of beads falling off. We recommend stringing one strand at a time. Onto the first strand, thread the following: a 6/0 copper seed bead, a wood bead, and repeat this pattern two more times. Thread two more seed beads, and then thread your strand through the bottom hole of a triple strand copper daisy spacer (FCO-2234). Thread two more seed beads, a wood bead, a seed bead, a wood bead, a copper woodland spacer bead (BMB-3892), and two more seed beads. Thread your strand through the bottom hole of the scrolled triple strand spacer bar (FCO-1521). From this point on, thread the rest of the strand in reverse order from how you strung the first half of the strand, or as a mirror image of the first half.
- When you get to the end of the first strand, secure it with another Bead Stopper and move onto the middle strand. Repeat the instructions in step two in order to string the middle strand and the last strand. The only difference is that you need to thread the middle strand through the middle hole on each three strand spacer bar, and likewise, you must thread the last strand through the last hole in each of the three strand spacer bars.
- After you have strung all three strands, remove the bead stopper from the first strand and thread a crimp tube onto it, but do not crimp it yet. Thread the end of this strand through a closed jump ring, back through the crimp tube and several of the beads on the strand. Pull the wire snug, and crimp the tube. Repeat this process for the other two strands, and then remove the bead stopper from the other end of the bracelet and repeat this process on all three strands.
- Using oval jump rings, add a three strand leaf reducer to both sides of the bracelet.
- Once again using oval jump rings, attach one half of the clasp to one end of the bracelet, and the other half of the clasp to the other end of the bracelet.
- Using the large antiqued copper jump ring, attach the bird pendant to the bottom strand of the bracelet near the center.
- Finally, place a crimp cover over each of the crimp tubes and gently squeeze them shut using your crimping pliers.