

## Love Grows Bracelet

Project B116

Designer: Andrea Morici

A dainty and dangly companion to our Love Grows necklace.



### What You'll Need

22K Gold Plated Curved Heart Lobster Clasps 12mm (10)



SKU: FCL-2551  
Project uses 1 piece

Nunn Design Antiqued Gold Plated Chain Flat Cable 4mm By The Foot



SKU: CHA-9810  
Project uses 1 foot

Antiqued 22K Gold Plated Krinkle Chain 2mm Bulk By The Foot



SKU: CHA-9646  
Project uses 1 foot

22K Gold Plated Head Pins - 21 Gauge - 2 Inches (50)



SKU: FHP-5220  
Project uses 18 pieces

22K Gold Plated Open Jump Rings Oval 4x6mm 20 Gauge (50)



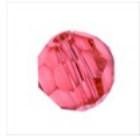
SKU: FJR-3916  
Project uses 6 pieces

22K Gold Plated Open Jump Rings 6mm (x100)



SKU: FJR-5260  
Project uses 7 pieces

SWAROVSKI ELEMENTS Crystal #5000 6mm Round Beads Indian Pink (10)



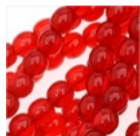
SKU: SWC-06098  
Project uses 6 pieces

Bali Style 22K Gold Vermeil Nuggets 4mm (12 Beads)



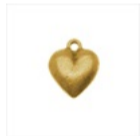
SKU: BMB-3064  
Project uses 6 pieces

Czech Glass Druk 4mm Round Ruby Red (100)



SKU: BCP-7420  
Project uses 6 pieces

Nunn Design Antiqued Gold Plated Pewter Large Puff Heart Pendant 14mm



SKU: PND-6594  
Project uses 1 piece

### Instructions:

1. Start by cutting both types of chain into five one inch long segments.
2. Group the thin chain segments with the thicker chain segments.
3. Join each of the five double-chain groupings with an oval jump ring, and include an oval jump ring at the beginning and the end.
4. Connect six of the round jump rings together, to form a chain. This will be your extender chain.
5. Connect the end of the extender chain to one of the oval jump rings at either end of the bracelet.
6. To the oval jump ring at the opposite end of your bracelet, attach your heart-shaped lobster clasp.
7. Open your last round jump ring and use it to attach the small golden heart pendant to the oval jump ring in the middle of your bracelet.
8. Thread each of your three types of bead onto headpins. Create a wrapped loop at the end of each.
9. Attach one of each type of bead to each of the oval jump rings, and attach one of each to the last link of the extender chain.