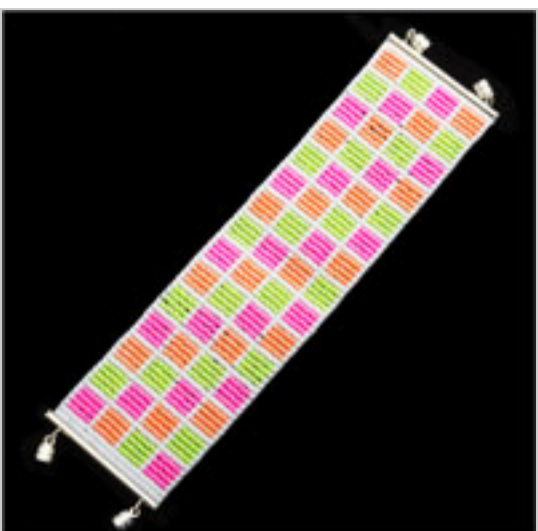


Dancefloor Bracelet

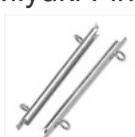
Project B1114 [Skill Level: Intermediate]
Designer: Megan Milliken

This brightly patterned bracelet features luminous new neon Delica beads. It works up quickly on a loom, and is finished with pretty, sleek slide ends.



What You'll Need

Miyuki Findings Silver Tone 2 Loop Seed Bead Slide End Tubes 35mm (2)
SKU: FCO-9094
Project uses 2 pieces



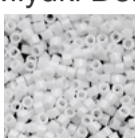
Silver Plated Engraved Magnetic Barrel Clasp 8.5x4mm (4 Sets)
SKU: FCL-6811
Project uses 2 pieces



NYMO Nylon Beading Thread Size D for Delica Beads White 64YD (58 Meters)
SKU: XCR-8901
Project uses 1 spool



Miyuki Delica Seed Beads 11/0 Opaque Chalk White DB200 6.6 Grams
SKU: DB-200
Project uses 1 tube



Miyuki Delica Luminous Seed Beads 11/0 - Lime Aid DB2031 (7.2 Gram Tube)
SKU: DB-2031
Project uses 1 tube



Miyuki Delica Luminous Seed Beads 11/0 - Creamsicle DB2033 (7.2 Gram Tube)
SKU: DB-2033
Project uses 1 tube



Miyuki Delica Luminous Seed Beads 11/0 - Cotton Candy DB2036 (7.2 Gram Tube)
SKU: DB-2036
Project uses 1 tube



Specialized Tools

BeadSmith Ricks Beading Loom Kit For Beginners - Weave Necklaces Bracelets And More!
SKU: XTL-6117



Fiskars 5 Precision Tip Scissors - Super Sharp
SKU: XTL-5700



English Beading Needles Size 12 (4 Needles)
SKU: XTL-3006



BeadSmith Cordless Thread Zap II Thread Burner Tool
SKU: XTL-0106



Instructions:

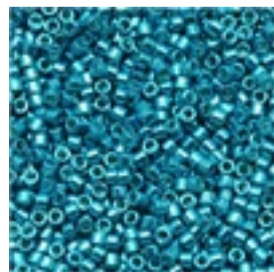
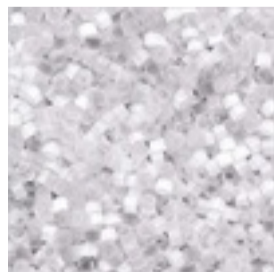
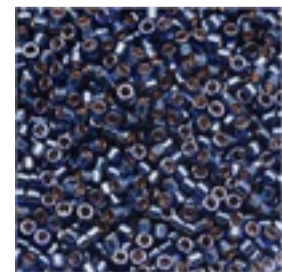
Finished size: approximately 6.25". To lengthen, be sure to set up your loom accordingly, and then simply continue the weaving, extending the pattern or adding extra rows of plain white beads to the ends. To shorten, be sure to set up your loom accordingly, and then simply stop the pattern when you achieve the desired length. The clasps will add approximately 3/4" to the length of the woven piece.

1. Before you begin, watch the instructional video: How to Use the Ricks Beading Loom. This video will walk you through the process of beading on this new type of loom.
2. You will need to tie off and add new thread as you work. If you are not familiar with how to do this, watch this video.
3. Use white NYMO thread to set up your beading loom with 26 warp threads about 5.25" long. Remember, this is the length from the outside edges of the warp rods.
4. As demonstrated in the video, begin to weave your bracelet. Using size 11/0 Miyuki Delica beads in opaque chalk white, luminous lime aid, luminous creamsicle, and luminous cotton candy, follow the pattern, adding one extra row of white beads at the beginning. These will fit inside the slide ends. Repeat the pattern four more times, then add one extra row of white beads at the end.
5. Finish the piece as shown in the video, removing it from the loom, spreading the beads evenly to take up the slack in the warp threads, and then tie off and weave in your thread tails.
6. Use pliers to fold down one end on a silver plated 2 loop tube slide end. Slide the last row of your woven piece into the tube, and then bend down the other end of the tube. Repeat with the second tube slide end on the other end of your woven piece.
7. Open the attached rings on one of the tube slide ends and insert a magnetic barrel clasp into each ring. Close the rings.
8. On the other tube slide end, open the attached rings and attach the other sides of the magnetic clasps. Close the rings.

Variations

Choose your favorite colors of Delica beads to personalize the look of your bracelet.

When substituting in items, pay attention to sizes and styles to make sure all your pieces will fit together.



Keywords: geometric, color blocked, colorful, neon, yellow, pink, orange, white, silver, loom, wide, bracelet, bright