

Emerald City Double Shambhala Bracelet

Project B1082 [Skill Level: Intermediate]
Designer: Megan Milliken

Beautiful Beadelle crystal beads and metal beads dance back and forth in this sparkly bracelet. The double shambhala look is actually just wrapped, and works up very quickly. Add a little shimmer to your favorite look!



What You'll Need

Waxed Cotton Cord 1.5mm Round - Black (5 Meters/16.5 Feet)



SKU: XCR-4300
Project uses 9 feet

22K Gold Plated 10mm Round Metal Beads (6)



SKU: BMB-5067
Project uses 6 pieces

Beadelle Crystal Candy 10mm Round Pave Bead Emerald (1 Piece)



SKU: BDLL-6306
Project uses 4 pieces

E6000 Industrial Strength Glue Adhesive (0.18 fl oz)



SKU: XTL-1054
Project uses 1 tube

Specialized Tools

Xuron Sharp Flush Cutter Pliers - Wire/Soft Flex



SKU: XTL-5600

Instructions:

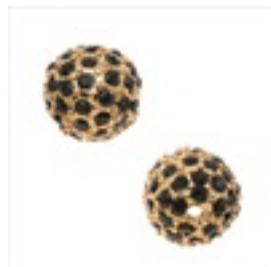
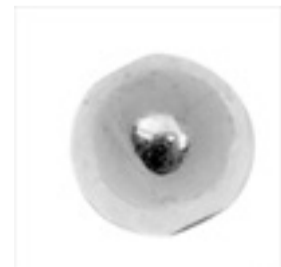
These instructions will create a finished bracelet that will adjust from about 6.5" to 7.5". To lengthen or shorten your bracelet, change the finished length of the middle cords.

1. Before you begin, watch the video: How to Make a Zig Zag Double Shambhala Bracelet. This video will walk you through the steps for making the bracelet.
2. Cut one 6' and one 3' length of 1.5mm black waxed cotton cord.
3. Fold the 3' length in half. Place the middle of the 6' length behind the top of the folded piece and tie a macrame square knot about 1" from the top where it's folded. Secure the top loop to your work surface. Tie 5 more square knots.
4. String one 10mm 22k gold plated bead, one 10mm emerald candy bead, 1 gold bead, 1 emerald bead, and 1 gold bead onto each of your middle strands. Loosely secure the bottom of the strands to your work surface.
5. Use the longer outside strands to wrap around the beads as demonstrated in the video.
6. Release the bottom of the strands from your work surface. Tie 6 square knots after the beaded section.
7. Finish the macrame square knotting with an overhand knot on the backside, secured with E6000 glue. Allow the glue to dry thoroughly before continuing.
8. Trim the ends about 5" from the end of the knotting (adjust for sizing) and tie an overhand knot near each end.
9. To close, bring one of the loose end strands through the loop at the top, then tie the loose ends into a bow.

Variations

Use different colors of beads, whether Beadelle beads, or other types, to give your bracelet a different look.

When substituting in items, pay attention to sizes and styles to make sure all your pieces will fit together.



Keywords: Beadelle, pave, crystal, Shambhala, Shamballa, macrame, knotted, gunmetal, green, emerald, gold