

Deco Knot Bracelet

Project B1029

Designer: Megan Milliken

Delicate hex cut seed beads in black and steel are woven together and then twisted into a beautiful focal knot in this bracelet. An elegant addition to your look for a night on the town.

What You'll Need

Fireline Braided Beading Thread .006 In. - Smoke Grey - 15 Yards

SKU: XCR-1285

Project uses 1 package



Gun Metal Plated 2 Strand Tube Clasps - 16.5mm (4)

SKU: FCL-5561

Project uses 1 piece



Miyuki Delica Hex Cut Seed Beads 15/0 Black DBSC0010 4 GR

SKU: DBSC-0010

Project uses 1 tube



Miyuki Delica Hex Cut Seed Beads 15/0 Steel DBSC021 4 GR

SKU: DBSC-0021

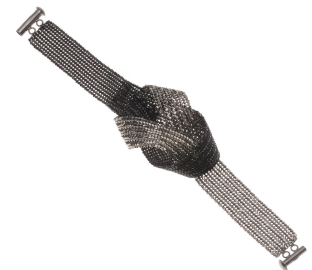
Project uses 1 tube



Recommended Tools:

[XTL-3006] BeadSmith English Beading Needles Size 12 (4 Needles), [XTL-5700] Fiskars 5

Precision Tip Scissors - Super Sharp, [XTL-0106] BeadSmith Cordless Thread Zap II Thread Burner Tool



Instructions

This bracelet looks best with a snug fit. Your finished bracelet should only be about 1/2" longer than your wrist measurement. Remember that the clasp will add about 1/2".

1. Before you begin, watch the video: How to do Herringbone Stitch. This video will demonstrate the stitch used to create this bracelet.
2. Thread a size 12 beading needle with a length of .006" Fireline beading thread in smoke. Use as long of a length as you are comfortable working with. You will need to add new thread several times throughout this project. If you are unfamiliar with how to do this, watch this video.
3. Using 10 black Miyuki Delica hex cut size 15/0 seed beads, create a row of ladder stitch about 6" from the end of your thread. You can see how to do ladder stitch in this video. Make sure that you don't pull the row of ladder stitch too tight, or else it will be smaller than the rows of herringbone stitch.
4. Work rows of herringbone stitch 10 beads wide in the black seed beads as demonstrated in the video until your piece measures as long as your desired finished bracelet length. I made mine 7" long.
5. Work your threads back through the last row as you would do a ladder stitch to make it match the first row. Tie off and weave in your ends.
6. Repeat this process to weave a second strip 10 beads wide and the same length using steel Miyuki Delica hex cut size 15/0 seed beads.
7. Take one of your woven pieces and twist the end around to form a loop. Do not just fold it flat in half, but make sure that it twists to form a symmetrical loop, as shown in the photos.
8. Bring one end of the loop to a point 2" from the end of the piece. With a new length of thread on your needle, weave through the last row of beads and the row that they lay against to secure the loop. Tie off and weave in your ends.
9. Lay this piece of weaving with the joined side down. The loop has two ways of twisting around, so make sure that yours is arranged so that if you were to flatten it out, the end of the loop would lay over the top of the sides of the loop, not underneath them.
10. Take your second woven piece and lay it under the first with the center going under the base of the loop. Take the ends of the new piece and fold them over the top of the first, bringing the ends through the loop on the first piece. Pull through, but not too tight. The resulting knot should look like the photo.
11. Bring one end of the new piece under the other and up to the point 2" from the end of the piece, while ensuring that you keep the knot in place. Secure the loop on your second piece as you did for the first.
12. Separate a gunmetal plated 2 strand tube clasp.
13. With a threaded needle, come up through the 3rd bead from one end on one end of your bracelet. Go through one of the loops on half of the clasp and back down into the bead. Then come up through the 4th bead from the end, through the same loop, and back down into the bead. Repeat this once more and then weave your thread over to the 3rd and 4th beads on the other side of that end and stitch through them to secure the other loop on the clasp as you did the first. Tie off and weave in your ends. Repeat this process with the other half of the clasp on the other end of the bracelet. Remember to make sure that your clasp halves are positioned correctly to close without twisting your bracelet.