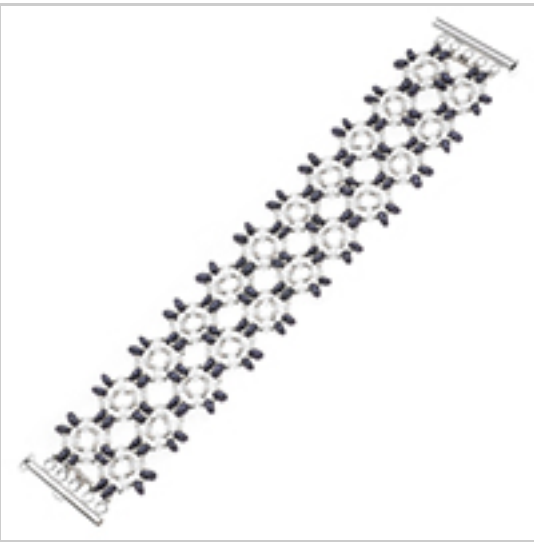


## Anne Twin Bead Bracelet

Project B1008

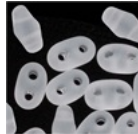
Designer: Megan Patton

Preciosa Twin beads and Miyuki Delica seed beads are woven together in a circular stitch in this delicate bracelet. It would be lovely for a dressed up evening out, or to add flair to any everyday look.



### What You'll Need

Preciosa Twin Beads 5x2.5mm 'Matte Crystal' (24 Grams)



SKU: BCT-002  
Project uses 1 tube

Preciosa Twin Beads 5x2.5mm 'Jet/Matte Plum Pearl' (24 Grams)



SKU: BCT-024  
Project uses 1 tube

Miyuki Delica Seed Beads 11/0 'Galvanized Silver' Metallic DB035 7.2 GR



SKU: DB-035  
Project uses 1 tube

Silver Plated Tube Clasp 31mm Five Rings Strands (2)



SKU: FCL-5506  
Project uses 1 piece

Wildfire Thermal Bonded Beading Thread .006 Inch - White- 50 Yd



SKU: XCR-8933  
Project uses 6 feet

### Specialized Tools

English Beading Needles Size 12 (4 Needles)



SKU: XTL-3006

Fiskars 5 Precision Tip Scissors - Super Sharp



SKU: XTL-5700

BeadSmith Cordless Thread Zap II Thread Burner Tool



SKU: XTL-0106

### Instructions:

Measure your wrist before you begin so that you can decide how long you will want your bracelet to be. The cuff style looks best with a somewhat snug fit. Keep in mind that the clasp will add about half an inch to the length.

1. Begin by cutting as long of a length of white Wildfire beading thread as you are comfortable working with. I like to work with about 6' of thread at a time, but find the length that feels comfortable to you. Thread a size 12 beading needle with the length of thread. You will need to end your thread and begin a new one once or twice while weaving this bracelet. Watch the video: How to Tie Off and Add a New Thread in Bead Weaving to learn how.
2. Watch the video: How to Bead Weave a Twin Bead Bracelet Using a Circular Stitch. This video will show you how to weave together your twin beads and size 11/0 Delica beads in this circular stitch. Follow the instructions given in the video to complete your bracelet. The video will also explain how to attach a clasp to your bracelet.

### Variations

Change the colors or finishes of your twin and seed beads to achieve many different looks using these instructions.

When substituting in items, pay attention to sizes and styles to make sure all your pieces will fit together.

