

Blue Colette Bridesmaid Bracelet

Project B1003

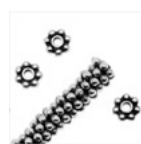
Designer: Megan Patton

This elegant bracelet features air blue opal and dark indigo Swarovski Crystal beads and has a formal, dainty look. It would make a fantastic bridal party gift, made in colors to match your bridesmaids' dresses.



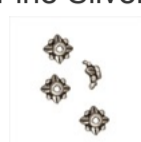
What You'll Need

Fine Silver Plated Pewter Daisy Spacer Beads 4mm (x 50)



SKU: BMB-3215
Project uses 8 pieces

Fine Silver Plated Pewter Leaf Bead Caps 5.7mm (x 4)



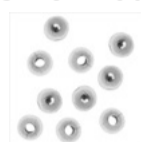
SKU: BMB-3269
Project uses 6 pieces

Silver Plated Curved Noodle Tube Beads 2mm x 38mm (12)



SKU: BMB-4072
Project uses 4 pieces

Silver Plated 3mm Round Metal Beads (100)



SKU: BMB-5052
Project uses 2 pieces

Silver Plated Pewter Sleek Wrap Toggle Clasp 12mm



SKU: FCL-7033
Project uses 1 piece

Beadalon Silver Plated Crimp Beads 1.3mm (95 Beads)



SKU: FCR-1210
Project uses 2 pieces

Silver Plated Wire & Thread Protectors .024 Inch Loops (50)



SKU: FCR-4165
Project uses 2 pieces

SWAROVSKI ELEMENTS Crystal 5301 4mm Bicone Beads Dark Indigo (50)



SKU: SWC-14096
Project uses 4 pieces

SWAROVSKI ELEMENTS Crystal 5601 6mm Cube Beads Air Blue Opal (4)



SKU: SWC-26094
Project uses 3 pieces

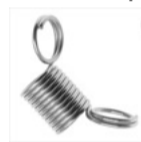
Soft Flex Best Beading Wire .014 Inch - 30 Ft.



SKU: XCR-5143
Project uses 2 feet

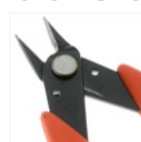
Specialized Tools

Bead Stopper- Stop Beads Sliding Off Stringing Material



SKU: XTL-3000

Xuron Sharp Flush Cutter Pliers - Wire/Soft Flex



SKU: XTL-5600

Double Notch Crimping Pliers - Works on 2mm And 3mm Crimps



SKU: XTL-5230

Beadsmith Jeweller's Micro Pliers Chain Nose Flat Nose



SKU: XTL-5511

Instructions:

These instructions will make a bracelet that is approximately 6 1/2" long. You can add or subtract beads from the center to lengthen or shorten the bracelet. For each cube bead with bead caps and bicone bead set that you add, it will add about 5/8" to your bracelet.

1. Cut two 12" lengths of .014" Soft Flex beading wire.
2. Hold the two lengths together and attach a bead stopper 2-3" from one end.
3. With the two lengths of wire together, string one 3 mm silver plated round bead followed by two 4 mm silver plated daisy spacer beads.
4. Next, string one 2 mm x 38 mm silver plated curved noodle tube bead onto each of the lengths of wire.
5. Bring the lengths of wire together and string two daisy spacer beads.
6. Then, with the lengths together, string one 4 mm Swarovski Crystal bicone bead, one 5.7 mm silver plated leaf bead cap, one 6 mm air blue opal Swarovski Crystal cube bead, and another leaf bead cap. Make sure that the bead caps are strung with the wide side facing the cube bead.
7. Repeat step 6 three times, and then, with the lengths together, string one bicone bead and then two daisy spacer beads.
8. Next, string one 2 mm x 38 mm silver plated curved noodle tube bead onto each of the lengths of wire.
9. Bring the lengths back together and string two daisy spacer beads followed by one silver plated round bead.
10. String a 1.3 mm silver plated crimp bead onto the end of your bracelet, with the lengths together. Then use a .024" silver plated wire and thread protector to attach one side of the 12 mm silver plated toggle clasp. Bring the strands of wire back through the crimp bead and silver plated round bead and use chain nose pliers to pull tight. Secure with the crimp bead and trim the excess wire with flush cutters.
11. Carefully remove the bead stopper from the other end of your work. String a crimp bead onto the end, with the lengths together, and use another wire and thread protector to attach the other side of the toggle clasp. Bring the strands of wire back through the crimp bead and silver plated round bead and use chain nose pliers to pull tight. Secure with the crimp bead and trim the excess wire with flush cutters.

Also see project B1004 for a different version of this project.

Variations

Try different shaped Swarovski Crystals or Swarovski Pearls in colors to match your wedding.

When substituting in items, pay attention to sizes and styles to make sure all your pieces will fit together.

