

## Tied Up in Love Bracelet

Project B1002

Designer: Megan Patton

A shambhala style bracelet made with elegant silk string and SWAROVSKI ELEMENTS crystals gives you a new way to wear Pandora style beads. Dress it up or down for any romantic occasion!



### What You'll Need

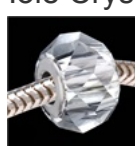
Silk Fabric String 2mm Crimson Red 42 Inch Strand (1)



SKU: XCR-46008

Project uses unit\_type=pieces pieces=3

SWAROVSKI ELEMENTS Crystal #5940 BeCharmed Briolette Bead - 4.5mm Hole Crystal x1



SKU: SWBB-5050

Project uses unit\_type=pieces pieces=3

Silver Tone Large Hole Lt Pink Enamel Bead Adorned With SWAROVSKI ELEMENTS Crystal - Fits Pandora (1)



SKU: BMB-8316

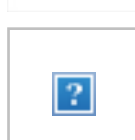
Project uses unit\_type=pieces pieces=4

E6000 Industrial Strength Glue Adhesive (0.18 fl oz)



SKU: XTL-1054

Project uses unit\_type=piece pieces=1

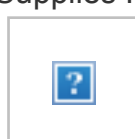


SKU:  
Project uses



SKU:  
Project uses

Supplies For Project B1002 - Tied Up in Love Bracelet

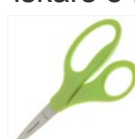


SKU: PROJECT-B1002

Project uses packages=1!) kit

### Specialized Tools

Fiskars 5 Precision Tip Scissors - Super Sharp



SKU: XTL-5700

### Instructions:

These instructions will make a bracelet that adjusts to approximately 7-8". You can add or subtract beads to change the length of the bracelet. Each extra bead will add approximately 3/4".

1. Begin by folding one strand of 2 mm red silk fabric string in half. Line up the ends of the other two strands with the folded end of the doubled strand and tie the three pieces in an overhand knot about 4" from the end. You should have two short and two long strands hanging below the knot.
2. Tie two macrame square knots. All of the macrame knots will be tied onto the shorter strands using the longer strands.
3. Thread a silver tone pink enamel and Swarovski crystal Pandora style bead onto the shorter strands. Bring the outside strands across the bead to either side and tie two macrame square knots after the bead.
4. Repeat step 3 with a 4.5 mm crystal colored Swarovski crystal BeCharmed briolette bead.
5. Continue to add beads, alternating between the enamel beads and the briolette beads, with two macrame square knots between each bead, until you've used all seven beads. End with two macrame square knots after the last enamel bead.
6. Finish the end of the last macrame knot with a square knot that is glued in place using a small amount of E6000 glue. Allow the glue to dry for at least an hour before moving on. Trim the ends of the string and finish with a bit of E6000 glue. Do not trim the shorter strands that run down the middle. Let the glue dry for at least an hour before moving on. Save one of the strands that is trimmed off to make the sliding knot clasp later.
7. Untie the overhand knot you made at the beginning of the bracelet. Finish this end of the knotting in the same manner as the first, allowing the glue to dry for at least an hour before moving on.
8. Bring the ends of the bracelet around into a loop, crossing over the loose center strands for a few inches. Use the trimmed off strand to tie a sliding knot clasp with four macrame square knots onto the bracelet.
9. Finish the sliding knot in the same manner as the ends of the bracelet knotting, allowing the glue to dry for at least an hour before moving on.
10. Adjust the sliding knot to sit about an inch from the bracelet knotting on either side. Tie the ends of the excess string into an overhand knot about 2" from each side of the sliding knot. Check to make sure that the bracelet adjusts to fit over your hand. If the fit is good, trim the ends of the string after the overhand knots. Apply a dab of E6000 glue to the tips to keep the string from fraying.
11. When you've finished, allow all of the glue to dry for 24 hours before wearing.

We recommend you treat this silk as you would any fine silk garment. It can be gently hand washed and air dried. Do not dry in direct sunlight.

### Variations

Change the color of string and use any type of Pandora style bead to suit your occasion.

When substituting in items, pay attention to sizes and styles to make sure all your pieces will fit together.

