

## Regal Bumble Bee Ring

**Project R630** [Skill Level: Intermediate]  
*Designer: Julie Bean*

This elegantly charming ring looks like it belongs in a Parisienne boutique. The focal is a Nunn Designs brass bumble bee surrounded by lovely rhinestone chain.



### What You'll Need

SWAROVSKI ELEMENTS Gun Metal Plated Rhinestone Cup Chain 32PP Crystal - BY FT



SKU: CHA-2030  
Project uses 3 inches

Amate Studios Silver Plated Oval Bezel Adjustable Ring 23.5x30mm (1)



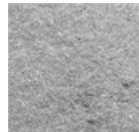
SKU: FRG-0830  
Project uses 1 piece

Crystal Clay 2-Part Epoxy Clay Kit 'White' 25 Grams



SKU: TRC-251  
Project uses 1 piece

Crystal Clay Sparkle Dust - Mica Powder 'Silver' 1.5g



SKU: XTL-1155  
Project uses 1 piece

Nunn Design Solid Brass Stamping Bumble Bee Embellishment 17.5x18.5mm (2)



SKU: PND-6858  
Project uses 1 piece

E6000 Industrial Strength Glue Adhesive (0.18 fl oz)



SKU: XTL-1054  
Project uses 1 piece

### Specialized Tools

Xuron Sharp Flush Cutter Pliers - Wire/Soft Flex



SKU: XTL-5600

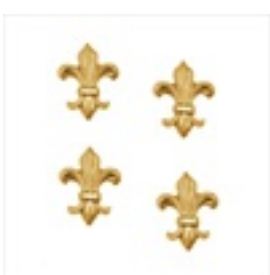
### Instructions:

1. Cut a piece of rhinestone cup chain that is 14 rhinestone links long.
2. Next, please watch the video on How to Use Crystal Clay.
3. From what you learned in the video, mix up a pea size amount of white Crystal Clay. Roll into an oval shape.
4. Place your cut piece of rhinestone chain into the ring bezel, facing upwards. The 14 link rhinestone chain should make a perfect oval inside the interior edge of the bezel.
5. Place your white Crystal Clay oval in the center of your ring and then carefully start to flatten it out so that it pushes against the rhinestone chain on all sides. You want your clay to be as even as possible with the tops of the rhinestones so it looks just like a flat plane. Next, use just the lightest touch of your fingertip to smooth over the surface of the clay so that any fingerprints or dents are removed.
6. Wash your hands.
7. Open up your silver Sparkle Dust container and dip the very tip of your finger into it (some of the silver will stick to your finger). Now rub your finger (with the silver on it) over the surface of your white Crystal Clay in the ring. Rub back and forth, not pushing on the clay, until the entire surface has a nice shiny silver appearance. If you need to dip your finger back into the powder and pick up more silver, do so and repeat this step until you are happy with the finish. Let "set" for at least 30 minutes before going to the next step.
8. Wash your hands again.
9. You now have two options - you can seal your silver color on the clay using a sealant such as Nunn Design Sealant OR you can leave it unsealed if you are sure that you will not be getting the ring wet. Sealing it will give you a shiny finish instead of the satin finish of the unsealed silver but it will make it more durable. Without sealing I found that some of the silver rubbed off with normal wear but it still definitely had a nice silver coating. If you choose to seal it, wait 30 minutes before going to the next step.
10. Take your Nunn Designs brass bumble bee and place E6000 glue on the backside of it. Flip it over and center in the ring, on top of the clay.
11. Let cure overnight.
12. Enjoy!

### Variations

Try making this same ring using different colors of Crystal Clay or a different Stardust Sparkle powder.

When substituting in items, pay attention to sizes and styles to make sure all your pieces will fit together.



**Keywords:** french, bug, crystal clay, cocktail ring