

# Gold Chevron Geometric Necklace

## Project N847

Julie Bean

Striking geometric shapes dominate this design. The shapes are created by connecting chevron links oriented in various directions to lengths of slim rolo chain. You can easily adjust the design to make it shorter if you prefer a shorter necklace.

## What You'll Need

Zola Elements Pendant Link, Chevron with Charm Loop 29x27.5mm, 2 Pieces, Satin Gold Tone

SKU: PNT-060

Project uses 3 pieces



Zola Elements Pendant, Tufted Spike 2.2x41mm, 2 Pieces, Satin Gold Tone

SKU: PNT-064

Project uses 1 piece



22K Gold Plated Open Jump Rings Oval 21 Gauge 3x4mm (50)

SKU: FJR-3921

Project uses 22 pieces



Nunn Design Antiqued 24kt Gold Plated Open Jump Rings Etched 6.5mm 17 Gauge (10)

SKU: FJR-2069

Project uses 1 piece



Nunn Design Antiqued 24kt Gold Plated Lobster Clasps 12mm (2)

SKU: FCL-7521

Project uses 1 piece



Nunn Design Antiqued Gold Plated Circle Flat Tag Pendant Link 13mm (2)

SKU: PND-6629

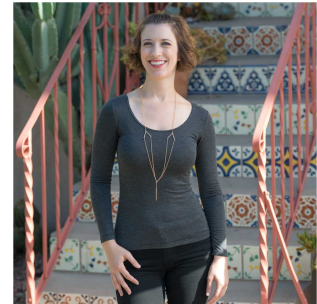
Project uses 2 pieces



Matte Gold Plated Slim Rolo Chain 2mm Bulk By The Foot

SKU: CHA-99959

Project uses 3 feet



## Recommended Tools:

[XTL-5600] Sharp Flush Cutter Pliers - For Cutting Beading Wire, 1 Piece, [XTL-0020] Baby

Wubbers Quality Fine Chain Nose Jeweller's Pliers, [XTL-5450] Xuron Jeweler's Super Fine

Pliers Chain Nose Flat Nose

## Instructions

1. Start by cutting the following chain lengths: 4 lengths that are 5 inches long each, 2 lengths that are 6 inches long each, and 1 length that is .5 inches long. For the remaining amount of chain, cut it in half so you have two equal lengths. Each one should be just under 2 inches long each.
2. This entire project is constructed by linking elements together with jump rings. To see how to open and close jump rings, please watch the video here.

3. We are going to start at the base of the necklace and work our way up to the clasp.
4. Start with your tuffeted spike pendant and using a jump ring, connect your short .5 inch length of chain to it. On the other side of the chain connect the bottom loop of one of your chevron links.
5. On one of the top loops of the chevron link, connect a 5 inch length of chain using a jump ring. Onto that same top loop, connect a second 5 inch length of chain using a second jump ring.
6. Take a second chevron link and turn it "upside down" so that the point is facing up. Now there are two loops facing down and one loop facing up. Onto each of those facing down loops, connect the other ends of your already attached 5 inch chain lengths. Please see photo for reference. This creates a fun triangular/arrow design with your chain.
7. Onto the top loop of that same chevron link, connect one of your 6 inch chain lengths. On the other end of that same 6 inch chain length, connect one of Nunn Design flat tag pendant links. On the other side of that pendant link, connect one of your short approx. 2 inch lengths of chain. On the other end of that chain, connect your lobster clasp.
8. Repeat the previous 3 steps on the other side of your necklace. When you get to the last step, connect a large Nunn Design jump ring instead of the lobster clasp.
9. Enjoy!