

Carnival Necklace

Project N653

Designer: Julie Bean

A gorgeous Beadelle Crystal round pave bead is the focal point of this very easy to make necklace. Choosing the fun multi-colored bead adds a sense of whimsy to this classically elegant design.



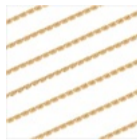
What You'll Need

Beadelle Crystal 14mm Round Pave Bead - Gold Plated / Dark Multi Rainbow (1 Pc)



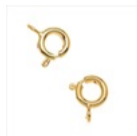
SKU: BDLL-0402
Project uses 1 piece

22K Gold Plated Sleek Beading Chain .7mm Bulk By The Foot



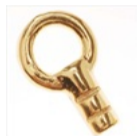
SKU: CHA-1621
Project uses 2 feet

22K Gold Plated Spring Ring Clasps 7mm (25!)



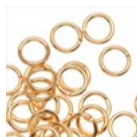
SKU: FCL-1571
Project uses 1 piece

22K Gold Plated Beading Chain End Cap (4) Fancy Crimp Beads



SKU: FCR-1323
Project uses 1 piece

22K Gold Plated Open Jump Rings 6mm (x100)



SKU: FJR-5260
Project uses 2 pieces



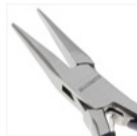
Specialized Tools

Xuron Sharp Flush Cutter Pliers - Wire/Soft Flex



SKU: XTL-5600

Beadsmith Jeweller's Micro Pliers Chain Nose Flat Nose



SKU: XTL-5511

Instructions:

Note: For this particular project I am choosing to make the necklace rather short, so the pretty crystal bead rests higher up along the neckline. If you prefer a longer necklace, the project kit ingredients allow you to make one up to 24 inches long - just cut your chain length longer in the first step.

1. Cut your beading chain to your desired necklace length, I chose to cut mine at 16".
2. Begin to make this necklace by watching the video: How to Use Beading Chain and Beading Chain End Caps.
3. Following what you learned in the video, attach a beading chain end cap to one side of your cut chain and crimp the body of the end cap to secure the chain in place.
4. Slide your bead onto the chain.
5. On the other end of the chain, fasten another beading chain end cap.
6. Open a jump ring and link it to the loop at the end of one of your beading chain end caps fastened to your necklace. Close the jump ring back up.
7. On the other side of your necklace, open another jump ring and link it to that ends beading chain end cap and also the small loop at the base of your clasp. Close the jump ring back up.
8. All done! It really was that easy to make this necklace!

Variations

So many gorgeous rhinestone beads to choose from!

When substituting in items, pay attention to sizes and styles to make sure all your pieces will fit together.

