

The Boulevard

Project N636

Designer: Julie Bean

Timeless and elegant this ornate beaded bead necklace is the perfect accessory for an evening soiree, night at the theatre, or jazz club rendezvous. All that is needed now is a little Sinatra playing the background.



What You'll Need

Czech Fire Polish Glass Beads 3mm Round Matte Jet Black (50)



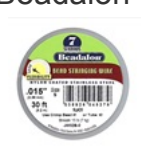
SKU: BCP-3394
Project uses 100 pieces

Czech Fire Polish Glass Beads 4mm Round 'Jet Matte' (50)



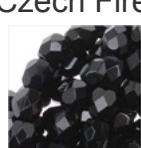
SKU: BCP-3489
Project uses 100 pieces

Beadalon Wire Black 7 Strand .015 Inch / 30Ft



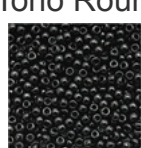
SKU: XCR-67553
Project uses 24 inches

Czech Fire Polish Glass Beads 5mm Round Jet Black (50)



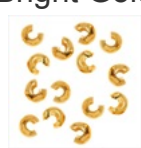
SKU: BCP-3590
Project uses 12 pieces

Toho Round Seed Beads 11/0 #49 'Opaque Jet' 8 Gram Tube



SKU: JSK-0032
Project uses 6 pieces

Bright Gold Tone Crimp Bead Covers 3mm (144)



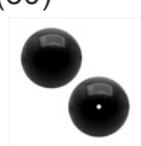
SKU: FCR-1056
Project uses 2 pieces

Beadalon Gold Plated Crimp Beads 1.3mm (85 Beads)



SKU: FCR-1200
Project uses 2 pieces

SWAROVSKI ELEMENTS Crystal Faux Round Pearls #5810 6mm Mystic Black (50)



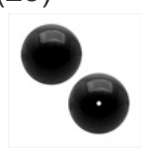
SKU: SWP-6072
Project uses 12 pieces

Japanese Nylon Beading K.O. Thread for Delica Beads - Black 50 Meters



SKU: XCR-9702
Project uses 4 feet

SWAROVSKI ELEMENTS Crystal Faux Round Pearls #5810 8mm Mystic Black (25)



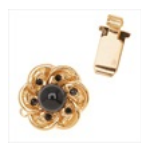
SKU: SWP-8072
Project uses 12 pieces

Bright 22K Gold Plated Lead-Free Pewter Disk Heishi Spacer Beads 4mm (50)



SKU: BMB-3926
Project uses 30 pieces

23K Gold Plated Box Clasp -Flower W/ Black SWAROVSKI ELEMENTS 14mm - EE1



SKU: FCL-4858
Project uses 1 piece

Czech Seed Beads 11/0 Light Gold Supra Metallic (1 Hank)



SKU: BCS-1161
Project uses 1 hank

Gold Plated Carousel Cone Beadcaps 9mm (4)



SKU: BMB-3798
Project uses 10 pieces

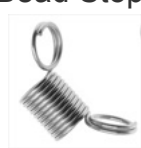
Specialized Tools

Standard Size Beading Crimping Pliers (For 2x2mm & 2x1mm Crimp Beads)



SKU: XTL-5200

Bead Stopper- Stop Beads Sliding Off Stringing Material



SKU: XTL-3000

Fiskars 5 Precision Tip Scissors - Super Sharp



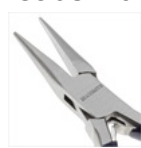
SKU: XTL-5700

Xuron Sharp Flush Cutter Pliers - Wire/Soft Flex



SKU: XTL-5600

Beadsmith Jeweller's Micro Pliers Chain Nose Flat Nose



SKU: XTL-5511

English Beading Needles Assortment So Handy



SKU: XTL-3004

Instructions:

- This necklace looks incredibly complex, but once you learn how to make an ornate beaded bead, you will realize it's not that hard. To begin, watch the video: How to Make an Ornate Beaded Bead using Right Angle Weave Double Needle Method
- Using what you learned in the video, cut 4 feet of Wildfire beading thread in black and thread a needle onto each end. Create 1 ornate beaded bead using 5mm Czech fire polished glass round beads in black and 11/0 Czech seed beads in light gold. When you finish the ornate beaded bead, tie off and weave your thread back into your bead work as show in the video here.
- Follow the same process as in the previous step, this time making:
 - 2 ornate beaded beads using 4mm Czech fire polished round beads in black and 11/0 Czech seed beads in light gold
 - 2 ornate beaded beads using 3mm Czech fire polished round beads in black and 11/0 Czech seed beads in light gold
 - 6 ornate beaded beads using 11/0 Toho seed beads in black and 11/0 Czech seed beads in light gold.

Regardless of the size of the beads you are using, you will use the exact same technique as shown in the video you watched.
- All your beaded beads are now finished. It is time to string the necklace.
- Cut a 24 inch length of beading wire. Place a bead stopper on one end, making sure to leave a tail of about 4 inches. At this point, decide how long you want your necklace to be. The one pictured is 15 1/2" which makes it a high up collar style necklace. For each extra inch you want, add 2 6mm Swarovski pearls and a spacer bead between them to each side of your necklace. Add these pearls to the directions below.
- Onto your beading wire, thread 1 gold crimp bead. Next thread 1 gold spacer bead, 1 6mm Swarovski faux pearl in mystic black, another spacer bead, another pearl, another spacer bead, another pearl, and finally another spacer bead. It is at this point you will want to add any extra beads to make your necklace longer.
- Next, thread onto your beading wire one of your smallest beaded beads, a gold spacer, a 6mm Swarovski pearl, and another spacer. Repeat this sequence another 2 times. Add an 8mm Swarovski faux pearl in mystic black and a gold plated pewter carousel cone bead cap (facing away from the pearl you just strung). Now add an ornate beaded bead which was made using 3mm Czech fire polished beads, another bead cone cap (strung widest side first), a Swarovski 8mm pearl, another bead cone cap (narrow side strung first), an ornate beaded bead made using 4mm Czech fire polished beads, another bead cone cap (widest side first), an 8mm Swarovski pearl, bead cone cap (narrow side strung first), and finally your ornate beaded bead made using 5mm Czech fire polished beads.
- String the second half of your necklace to make it a mirror image of the first half. If you chose to lengthen your necklace, add any additional beads before you add your end crimp bead. Make sure both sides are identical.
- After you have added the crimp bead (but have not crimped) thread your beading wire through the loop at the base on one side of your 23k gold plated box clasp. Pull the beading wire through the loop then back around and through the crimp bead again and several beads adjacent to it. Pull snug and crimp the bead. Cut off excess wire.
- Go to the other side of your necklace and remove the bead stopper. Repeat the step above using the other half of your clasp. Crimp the bead and cut off excess wire.
- As a finishing touch, place one gold tone crimp cover over each of the crimp beads. Just fit the crimp bead cover on top of the crimped crimp bead so that it surrounds it. Using your chain nose/flat nose pliers, squeeze both sides of the crimp cover until the gap is closed.
- I hope you enjoy your lovely new necklace.